

Seasonal Update - September 2018

Chris Materne, Pastoral Production, Alice Springs



(El Niño + Positive IOD) during spring = **Drier** Conditions!

The El Niño-Southern Oscillation is currently neutral, but there is a 50% chance of El Niño forming in the coming months. El Niño during Spring typically means below-average rainfall in eastern and northern Australia, including a later than average start to the northern wet season. Similarly the Indian Ocean Dipole (IOD) is also neutral. However, outlooks suggest a brief positive IOD event may form during Spring, and typically reduces rainfall in central and southern Australia. A positive IOD can also exacerbate any El Niño-driven rainfall deficiencies.

The national outlook for October to December indicates that:

- **DRIER** than average conditions are more likely across much of the NT, especially across the central and southern districts.
- **WARMER** than average days and nights are more likely across the entire NT.

For further information go to: <http://www.bom.gov.au/climate/outlooks/>

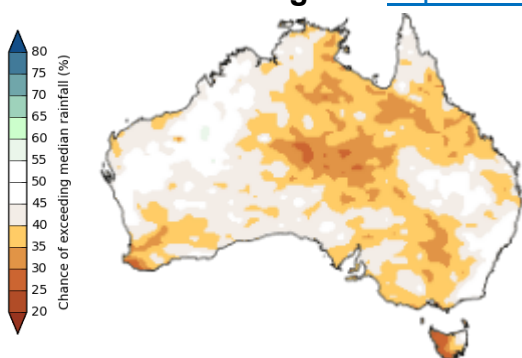


Figure 1: Chance of above the median rainfall.
(October to December 2018)

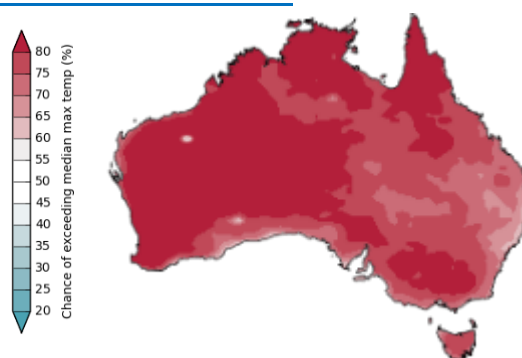


Figure 2: Chance of above the median maximum temperature.
(October to December 2018)

Northern Territory Pastoral Districts					
Indicator	Southern Alice Springs	Plenty	Northern Alice Springs	Tennant Creek	Comments
Past 12 Months Total pasture growth	↓	↓	↓	↔	Arrows indicate trend compared to the long-term median.
Current estimated standing biomass	↓	↓	↓	↓	Arrows indicated trend since previous quarter.
Current fire risk	↓	↓	↔	↔	Arrows indicate the trend since the previous quarter.
Current seasonal outlook	↓	↓	↑	↔	Arrows indicate the trend since previous quarter and consider forecasted model predictions.

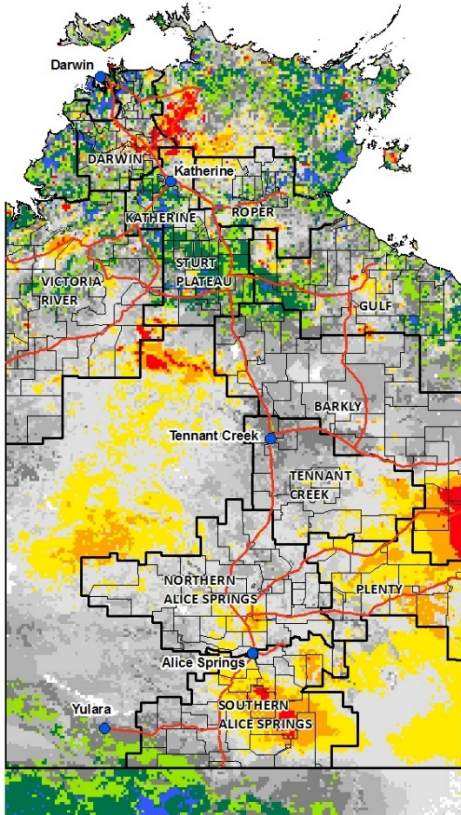
Legend:

Increasing Trend = ↑
Decreasing Trend = ↓
Steady = ↔

Green = low risk
Orange = watch
Red = high risk

AussieGRASS - September 2018

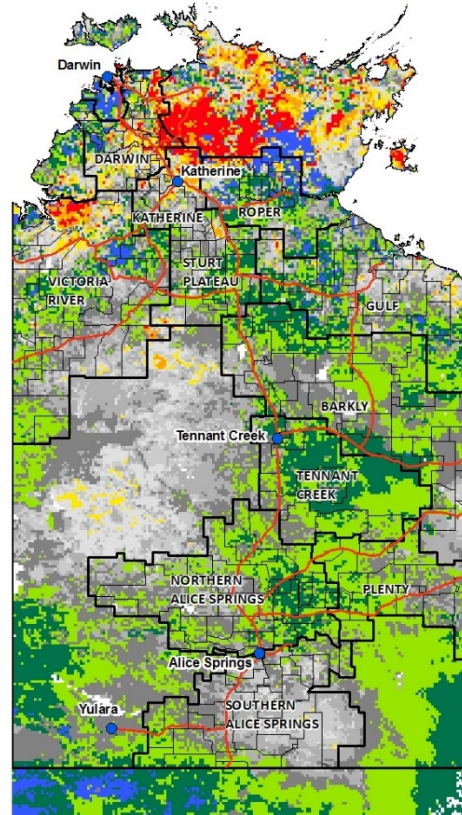
Chris Materne, Pastoral Production, Alice Springs



Past 12 Months Pasture Growth relative to historical growth since 1957 (as at the 1st September 2018)

Legend

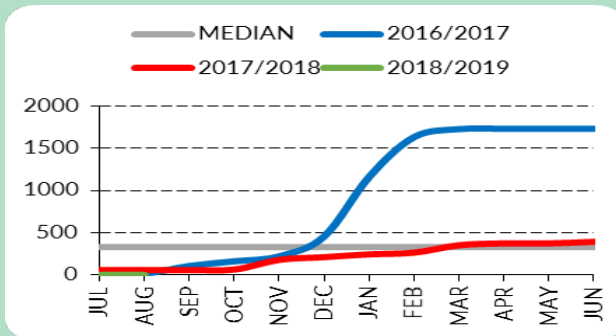
- Extremely low (0-10%)
- Well below aver. (10-20%)
- Below average (20-30%)
- Average (30-70%)
- Above average (70-80%)
- Well above aver. (80-90%)
- Extremely high (90-100%)



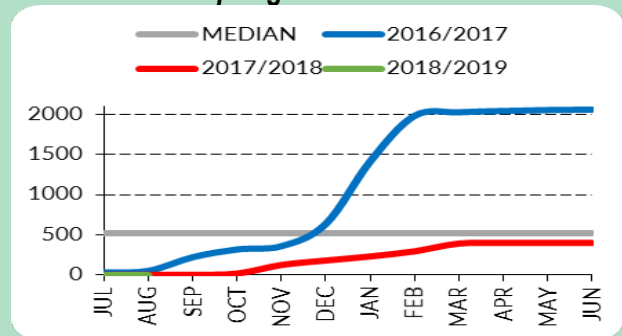
Past 24 Months Pasture Growth relative to historical growth since 1957 (as at the 1st September 2018)

Median district pasture growth (kg/ha) — running total

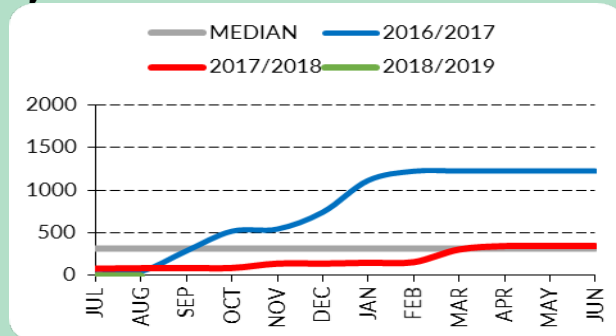
Tennant Creek District



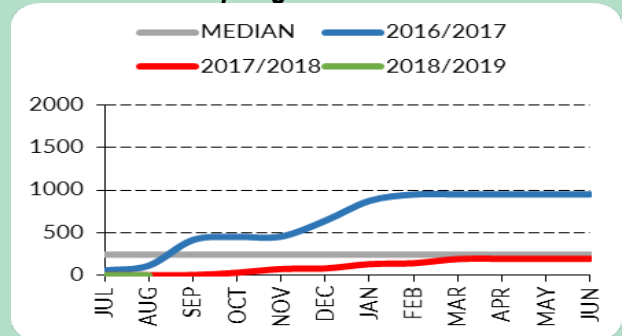
Northern Alice Springs District



Plenty District



Southern Alice Springs District



If you would like further information, please contact Chris on 895 18111

