

Northern Territory Labour Market

May 2021

Monthly change (unless otherwise specified)



Population

Quarterly Change (December 2020)

246 561 total resident population
Quarterly change (December 2020)

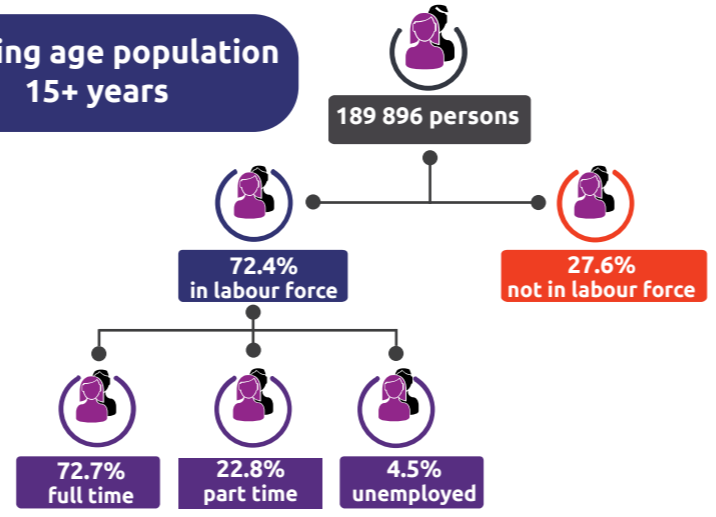
30.3% Aboriginal (Census data)

59.1% live in greater Darwin area

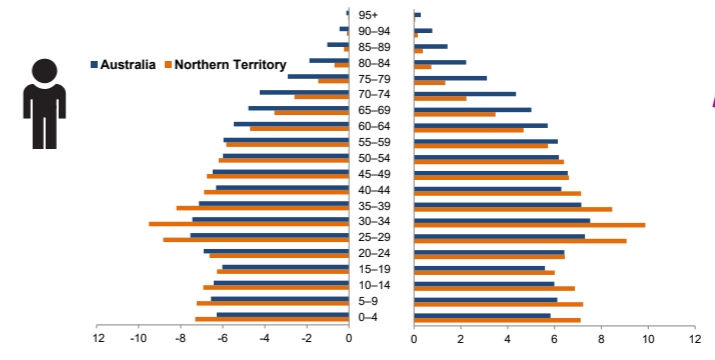
1.0% of national population

national population **25.7 million**

Working age population 15+ years



Population pyramid



Median age

(to the nearest year)

33
Northern Territory

37
Australia



Employed

131 286 persons

▼ **76 persons**

Unemployed

levels **6198 persons** rate **4.5%**

▲ **1012 persons** ▲ **0.7 ppt**

National unemployment rate **5.1%**

▼ **0.4 ppt**



Youth unemployment

year average levels **2400 persons** rate **9.2%**

▼ **59 persons** ▼ **0.2 ppt**

Job vacancies

Quarterly change (February 2021)

YoY change

NT ▲ **0.0%** Australia ▼ **2.6%**

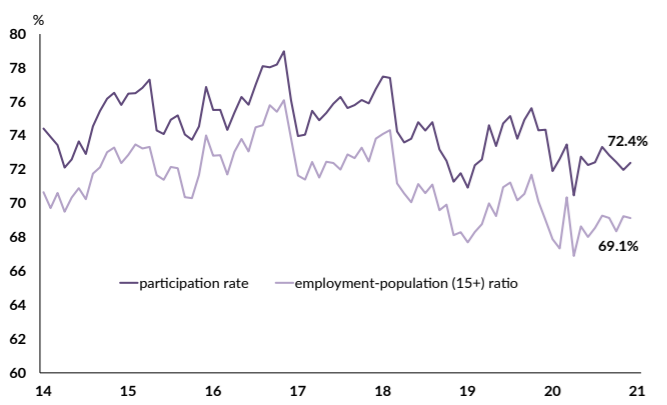
Quarterly change

▲ **14.3%** ▲ **12.3%**

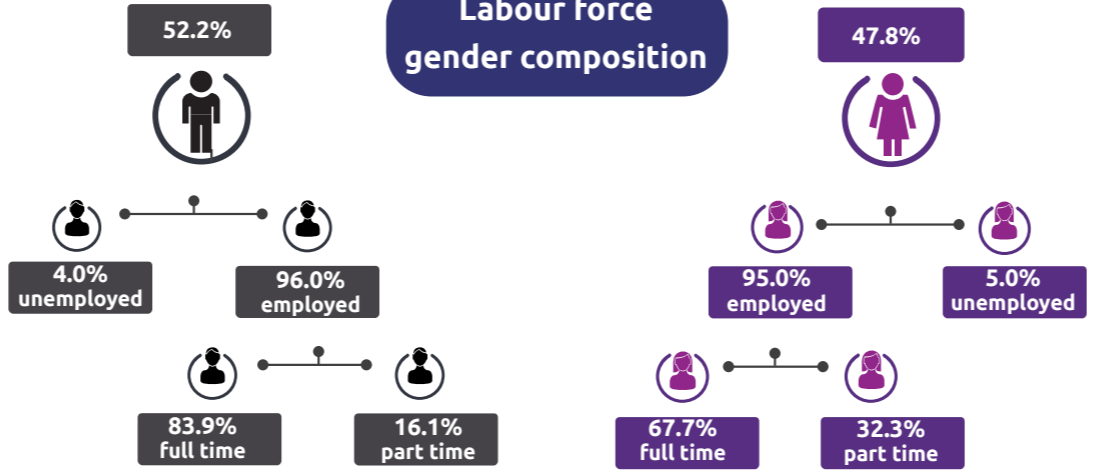
3.5 unemployed persons per every job vacancy nationally

1.6 unemployed persons per every NT job vacancy

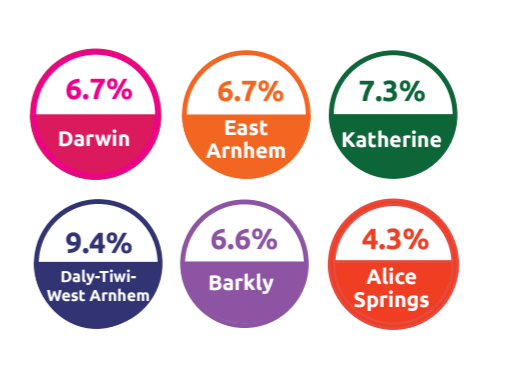
Employment and participation rates



Labour force gender composition



Regional unemployment rates



Industry share of employment

Quarterly change (February 2021)

60.1% of Territory workers are employed in the Greater Darwin region

8.4% Retail

8.4% Construction

7.3% Education and Training

18.7% Health care and social assistance

16.7% Public administration and safety

Employment growth by industry

Quarterly change (February 2021)



- Mining
- Electricity, Gas, Water
- Health care and social assistance
- Public Administration
- Education and training

Wage price index

Quarterly change (March 2021)

Job numbers	Year on year %
2900	33.2
2100	15.2
22600	13.6
22700	9.7
13100	5.6

▲ **0.5%** NT change in price of wages

▲ **0.7%** NT change in private sector

▲ **0.1%** NT change in public sector

▲ **0.5%** National change in price of wages