

Northern Territory Labour Market

December 2020

Monthly change (unless otherwise specified)



Population

245 980 total resident population
Quarterly change (June 2020)

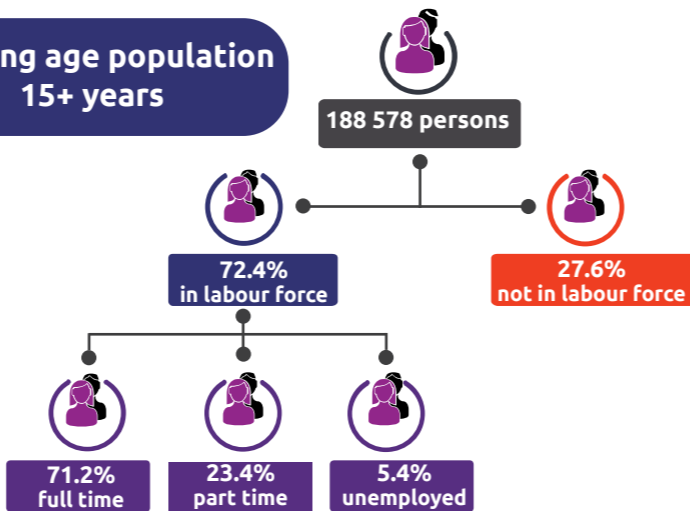
30.3% Aboriginal (Census data)

59.1% live in greater Darwin area

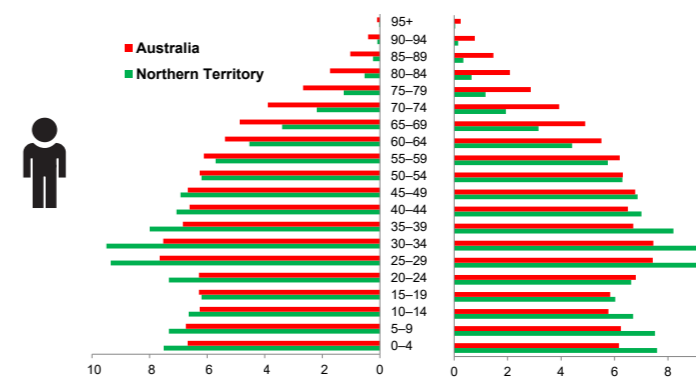
1.0% of national population

25.6 million

Working age population 15+ years



Population pyramid



Median age

(to the nearest year)

33

Northern Territory

37

Australia

Employed

129 173 persons

▲ 858 persons

Unemployed

levels **7434 persons** rate **5.4%**

▼ 677 persons ▼ 0.5 ppt

National unemployment rate **6.6%**

▼ 0.2 ppt



Youth unemployment

year average levels **2560 persons** rate **12.9%**

▼ 492 persons ▼ 2.7 ppts

Job vacancies

(November 2020)

YoY change

NT ▼ **-16.7%** Australia ▼ **-9.9%**

Quarterly change

▲ **flat** ▲ **24.6%**

3.4 unemployed persons per every job vacancy nationally

1.9 unemployed persons per every NT job vacancy

Employment and participation rates



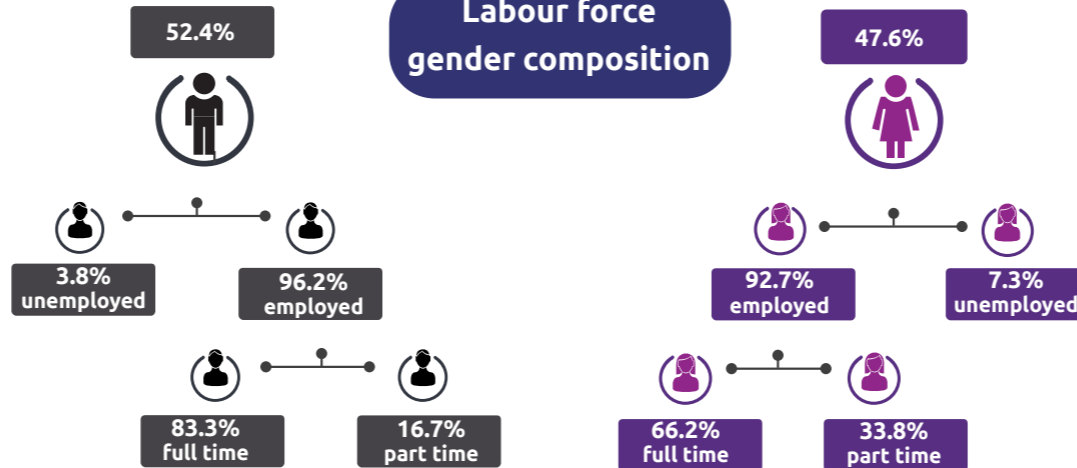
NT Aboriginal participation rate (2016)

37.3%

National participation rate

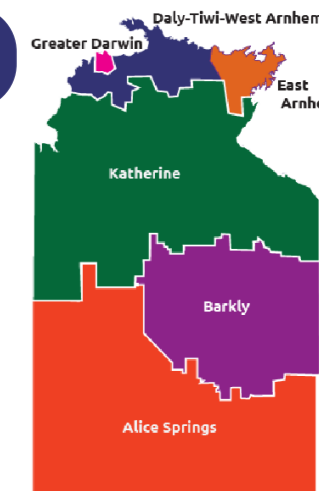
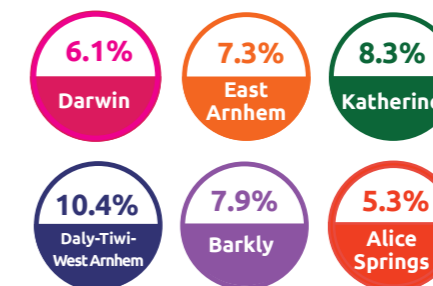
66.2%

Labour force gender composition



Regional unemployment rates

Quarterly change (June 2020)



Industry share of employment

Quarterly change (November 2020)

Top 5

Construction 7.7%

Retail 9.0%



60.1% of Territory workers are employed in the Greater Darwin region



Health care and social assistance 16.6%



Public administration and safety 17.7%

Employment growth by industry

Quarterly change (November 2020)

Top 5

Industry	Job numbers	Year on year %
Education and training	13 634	14.9
Public administration and safety	23 157	13.1
Health care and social assistance	21 759	10.4
Information media and telecommunications	1 604	6.6
Professional, scientific and technical services	7 475	6.0

Wage price index

Quarterly change (September 2020)

- ▲ 0.4% NT change in price of wages
- ▲ 0.4% NT change in private sector
- ▲ 0.5% NT change in public sector
- ▲ 0.4% National change in price of wages