

# Northern Territory Labour Market

August 2020

Monthly change (unless otherwise specified)



## Population

**244 761** total resident population  
Quarterly change (December 2019)

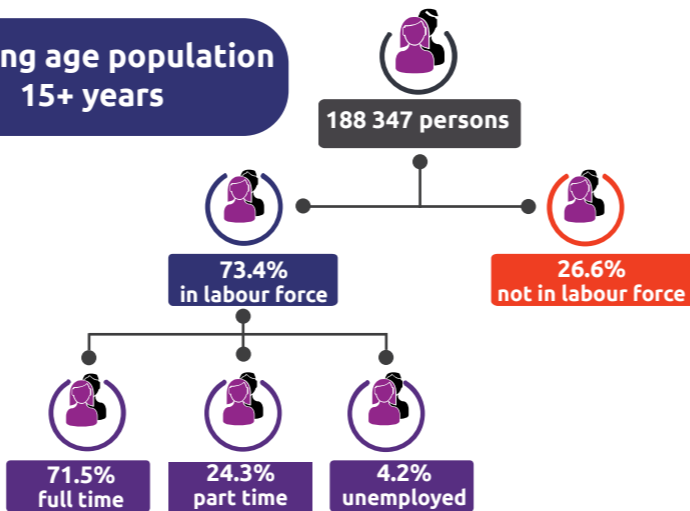
**30.3%** Aboriginal (Census data)

**59.1%** live in greater Darwin area

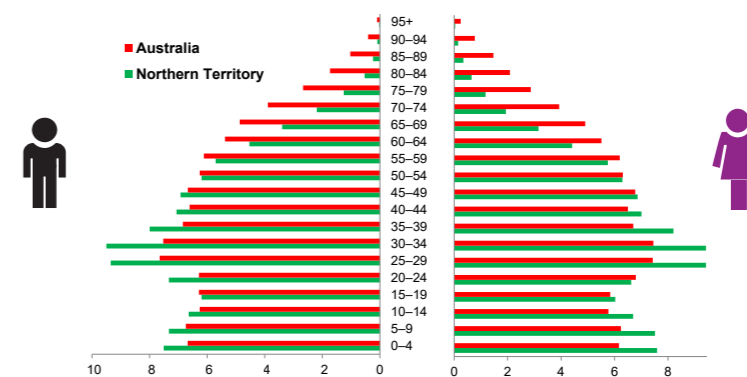
**1.0%** of national population

25.6 million

## Working age population 15+ years



## Population pyramid



## Median age

(to the nearest year)

33

Northern Territory

37

Australia

## Employed

**132 461 persons**

▲ 5784 persons

## Unemployed

levels 5829 persons rate 4.2%

▼ 4416 persons ▼ 3.3 ppt

National unemployment rate 6.8%

▼ 0.7 ppt



## Monthly hours worked

levels (000's) 18 779

▲ 323 hours

## Job vacancies

Quarterly change (May 2020)

YoY change

NT ▼ -18.4%

Australia ▼ -11.8%

Quarterly change

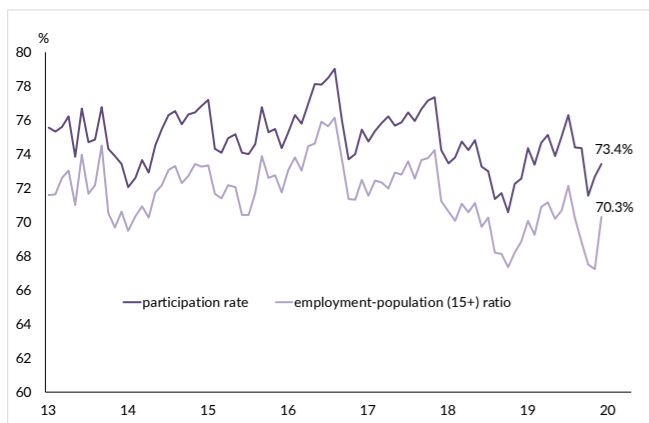
NT ▼ -41.4%

Australia ▼ -45.8%

7.4 unemployed persons per every job vacancy nationally

3.4 unemployed persons per every NT job vacancy

## Employment and participation rates



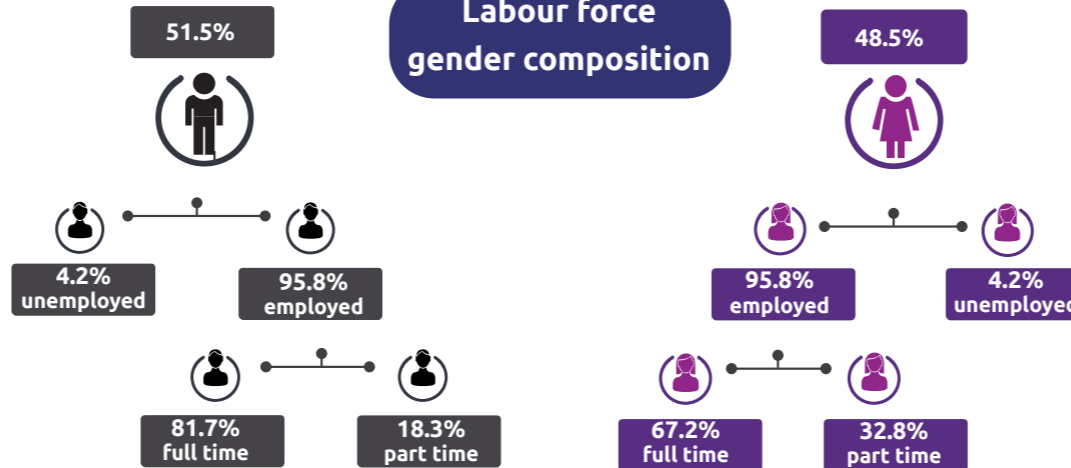
NT Aboriginal participation rate (2014-15)

47.0%

National participation rate

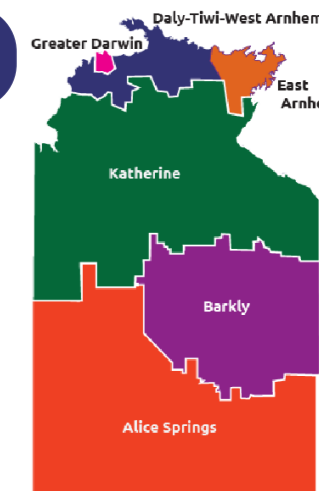
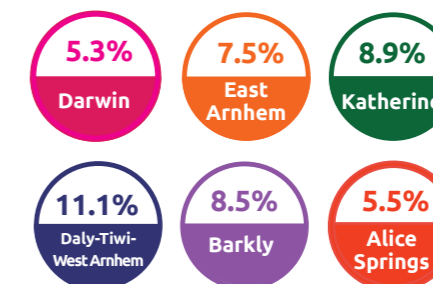
68.8%

## Labour force gender composition



## Regional unemployment rates

Quarterly change (March 2020)



## Industry share of employment

Quarterly change (May 2020)

Top 5

Construction 8.2%

Retail 8.8%

60.1% of Territory workers are employed in the greater Darwin region



Health care and social assistance 15.8%



Public administration and safety 16.7%

## Employment growth by industry

Quarterly change (May 2020)

Top 5

- ▲ Agriculture, forestry and fishing
- ▲ Education and training
- ▲ Wholesale trade
- ▲ Professional, scientific and technical services
- ▲ Retail trade

Job numbers	Year on year %
2410	34.5
12 764	13.0
2556	11.0
7383	8.9
11 620	8.3

## Wage price index

Quarterly change (June 2020)

- ▲ 0.1% NT change in price of wages
- ▲ 0.2% NT change in private sector
- flat NT change in public sector
- flat National change in price of wages