

Northern Territory Labour Market

December 2019

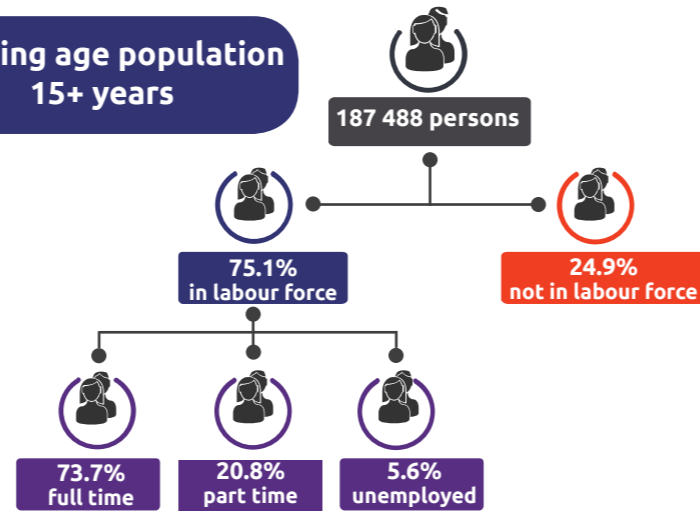


Population

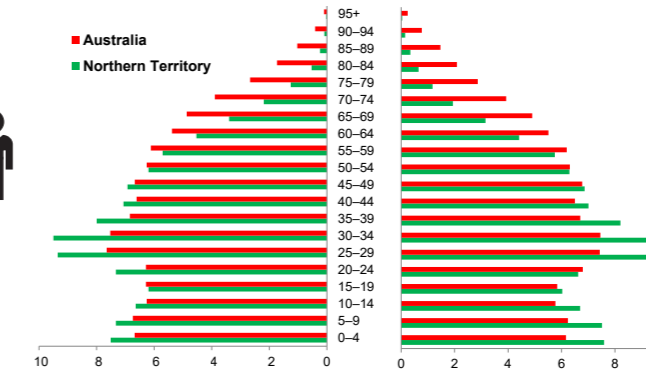
245 869 total resident population
 30.3% Aboriginal (Census data)
 59.1% live in greater Darwin area
 1.0% of national population

25.4 million

Working age population 15+ years



Population pyramid



Median age

(to the nearest year)

33 Northern Territory
 37 Australia



Employed

133 109 persons
 ▲ 444 persons

Unemployed

levels 7843 persons rate 5.6%
 ▲ 126 ▲ 1.6 ppts
 National unemployment rate 5.1%
 ▼ 0.6 ppts



Youth unemployment

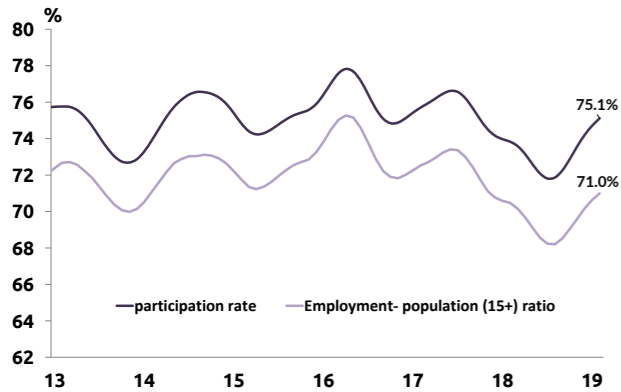
year average 2231 persons rate 11.7%
 ▲ 40 persons ▲ 0.9 ppts

Job vacancies

YoY change NT 3.3% Australia 2.0%
 Quarterly change NT 20.5% Australia 2.3%

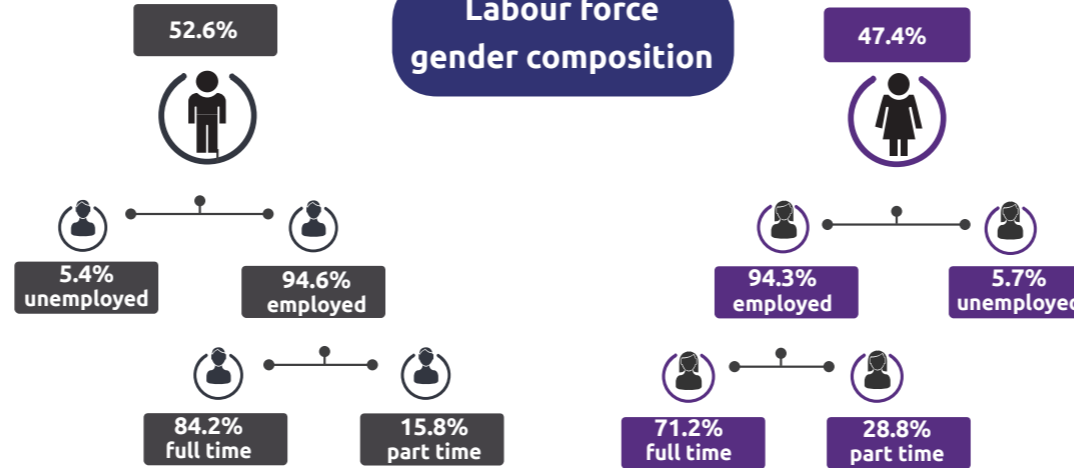
2.9 unemployed persons per every job vacancy nationally
 1.8 unemployed persons per every NT job vacancy

Employment and participation rates

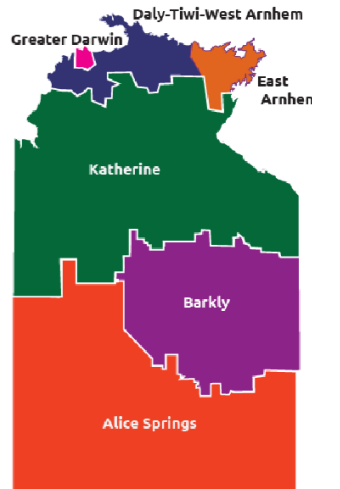
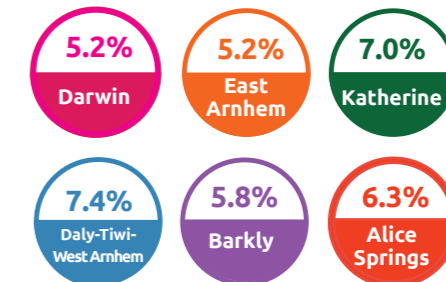


NT Aboriginal participation rate (2014-15) 47%
 National participation rate 66.0%

Labour force gender composition



Regional unemployment rates



Industry share of employment

Retail 8.8%

60.1% of Territory workers are employed in the greater Darwin region

Top 5 Construction 7.8%

Health care 15.0%

Public admin 15.7%

Education 9.1%

Employment growth by industry

Top 5

| | | |
|---|--------|------|
| Wholesale trade | 2983 | 28.8 |
| Rental, hiring and real estate services | 2288 | 16.5 |
| Agriculture, forestry and fishing | 2216 | 15.4 |
| Retail trade | 11 428 | 5.74 |
| Administrative and support services | 5616 | 4.0 |

Job numbers Year on year %

Wage price index

▲ 1.0% NT change in price of wages
 ▲ 1.0% NT change in private sector
 ▲ 0.9% NT change in public sector
 ▲ 0.8% National change in price of wages