

Northern Territory Labour Market

May 2019

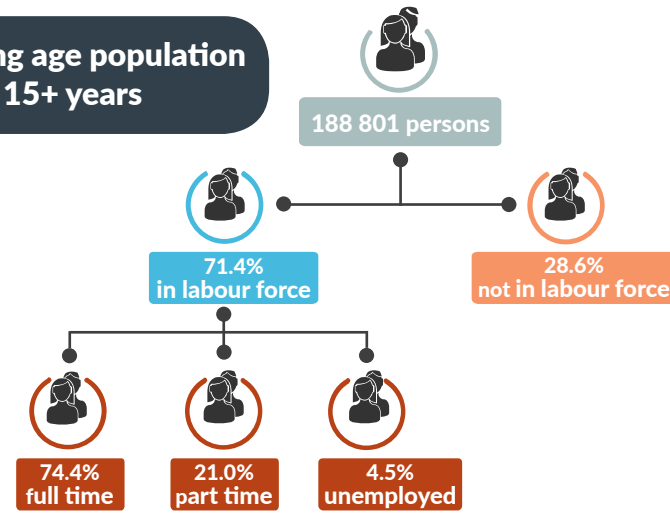


Population

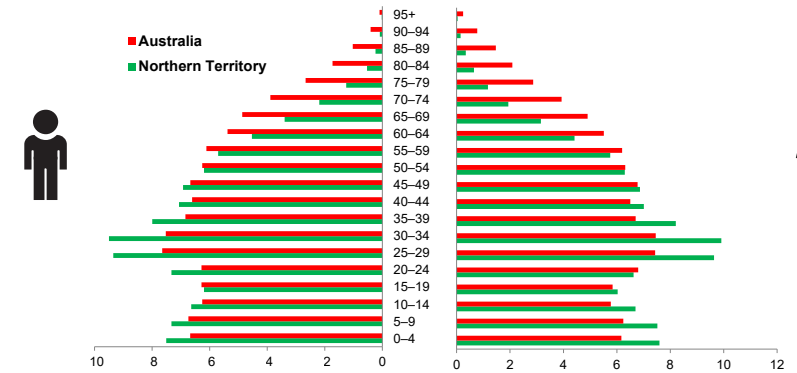
247 159 total resident population
 30.3% Aboriginal (Census data)
 59.1% live in Greater Darwin area
 1.0% of National population

25.3 million

Working age population 15+ years



Population pyramid



Younger Territory population

32.6

NT median age (years)

37.3

National median age (years)

Employed

129 704 persons
 125 persons



Unemployed

levels 6230 persons
 rate 4.5%
 75
 National unemployment rate 5.1%
 flat



Youth unemployment

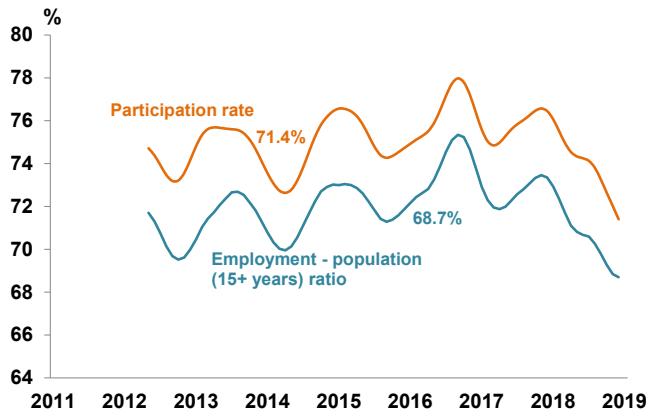
year average levels 2003 persons
 rate 10.1%
 21 persons
 0.4 pts

Job vacancies

Yearly change
 NT 16.8%
 Australia 18.3%
 Quarterly change
 NT 8.1%
 Australia 1.1%

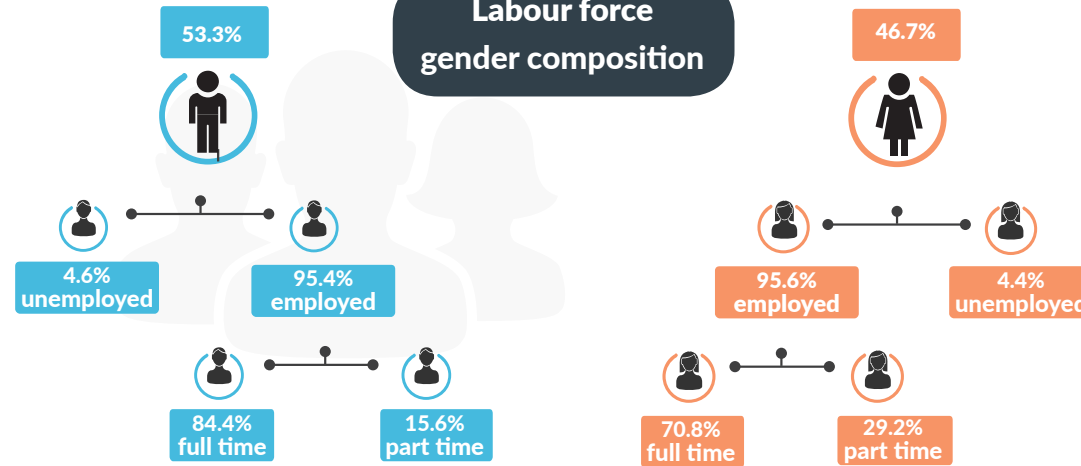
2.9 unemployed persons per every job vacancy nationally
 1.8 unemployed persons per every NT job vacancy

Employment and participation rates

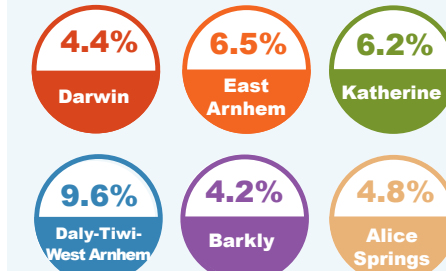


NT Aboriginal participation rate (2014-15) 47%
 National participation rate 65.9%

Labour force gender composition



Regional unemployment rates



Industry share of employment

Top 5



Employment growth by industry

Top 5

Industry	Job Numbers	Year on Year %
Information media and telecommunications	1911	47.3
Wholesale trade	2486	23.9
Other services	7078	21.3
Agriculture, forestry and fishing	1917	18.0
Public administration and safety	21 836	17.7

Wage price index

- 0.5% NT change in price of wages
- 0.5% NT change in private sector
- 0.4% NT change in public sector
- 0.5% National change in price of wages