

# Northern Territory Labour Market

February 2020

Monthly change (unless otherwise specified)

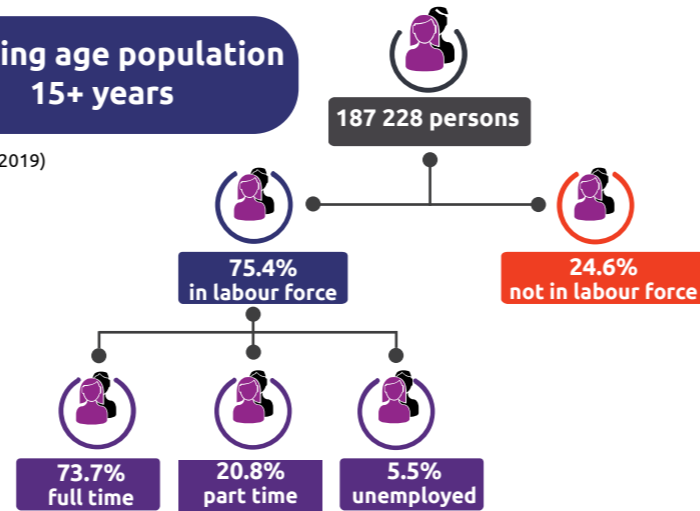


## Population

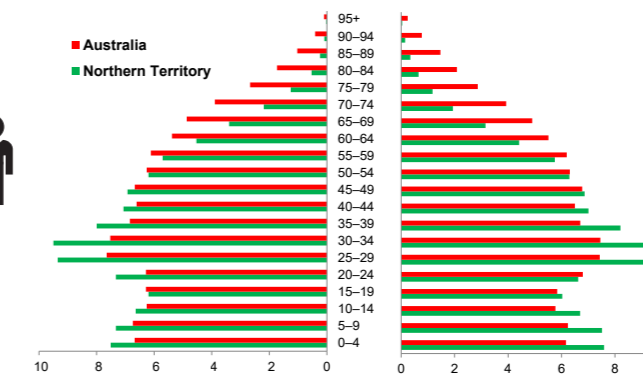
**245 562** total resident population Quarterly change (September 2019)  
**30.3%** Aboriginal (Census data)  
**59.1%** live in greater Darwin area  
**1.0%** of national population

**25.5 million**

## Working age population 15+ years



## Population pyramid



## Median age

(to the nearest year)



## Employed

**133 204 persons**  
 ▲ **265 persons**

## Unemployed

levels **7806 persons** rate **5.5%**  
 ▲ **41** ▲ **0.5 ppts**  
 National unemployment rate **5.1%**  
 flat

## Youth unemployment

year average **2267 persons** rate **12.2%**  
 flat ▲ **1.5 ppts**

## Job vacancies

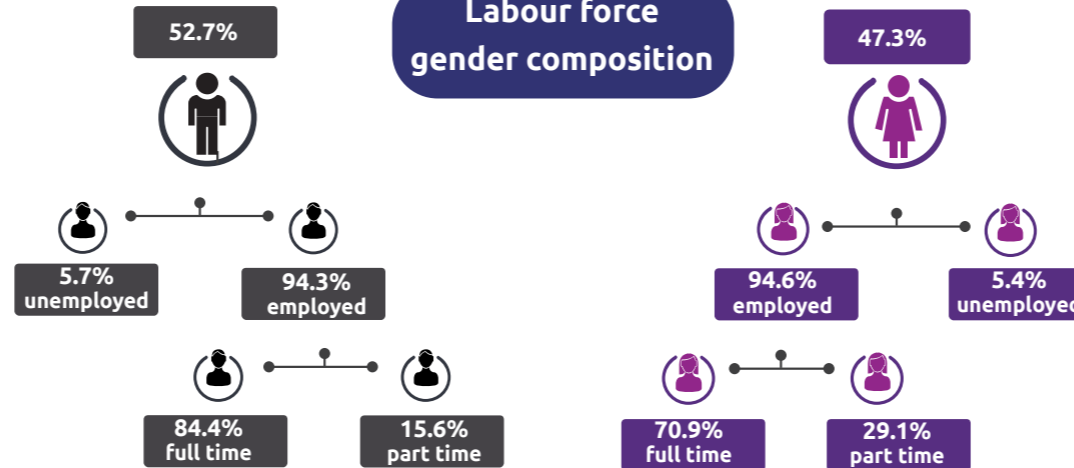
YoY change  
 NT ▲ **3.3%** Australia ▲ **2.0%**  
 Quarterly change  
 NT ▼ **20.5%** Australia ▲ **2.3%**

**2.9** unemployed persons per every job vacancy nationally  
**1.8** unemployed persons per every NT job vacancy

## Employment and participation rates

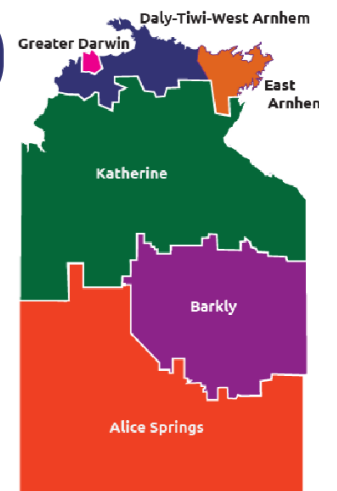
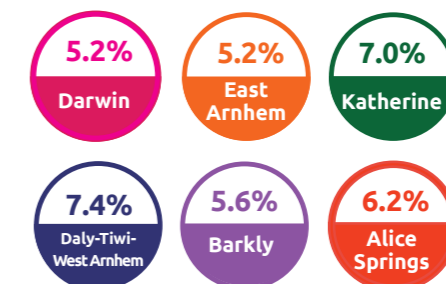


## Labour force gender composition



## Regional unemployment rates

Quarterly change (September 2019)



## Industry share of employment

Quarterly change (November 2019)

Retail **8.8%**

**60.1%** of Territory workers are employed in the greater Darwin region

**Top 5** Construction **7.8%**

Health care **15.0%**

Public admin **15.7%**

Education **9.1%**

## Employment growth by industry

Quarterly change (November 2019)

**Top 5**

Wholesale trade	2983	28.8
Rental, hiring and real estate services	2288	16.5
Agriculture, forestry and fishing	2216	15.4
Retail trade	11 428	5.74
Administrative and support services	5616	4.0

Job numbers

Year on year %

## Wage price index

Quarterly change (December 2019)

▲ **0.9%** NT change in price of wages  
 ▲ **0.5%** NT change in private sector  
 ▲ **1.5%** NT change in public sector  
 ▲ **0.5%** National change in price of wages