

Northern Territory Labour Market

November 2020

Monthly change (unless otherwise specified)



Population

245 980 total resident population
Quarterly change (June 2020)

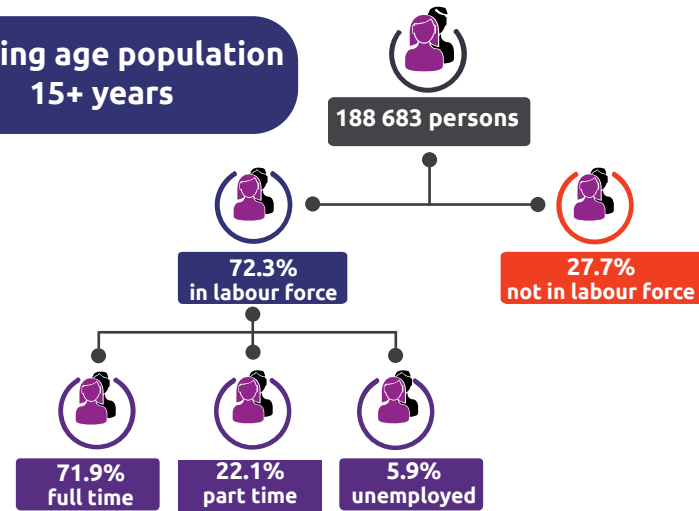
30.3% Aboriginal (Census data)

59.1% live in greater Darwin area

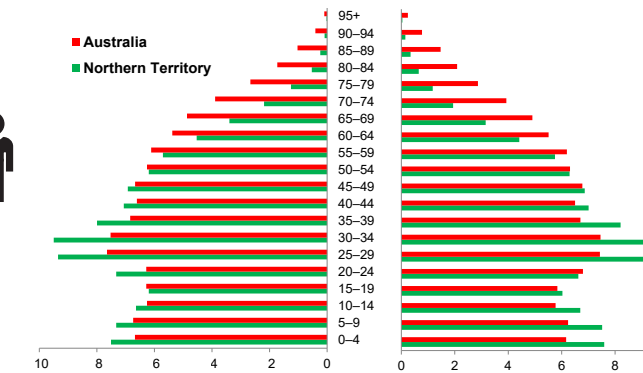
1.0% of national population

25.6 million

Working age population 15+ years



Population pyramid



Median age

(to the nearest year)

33
Northern Territory

37
Australia



Employed

128 315 persons

▼ 1241 persons

Unemployed

levels **8111 persons** rate **5.9%**

▲ 329 persons ▲ 0.3 ppt

National unemployment rate **6.8%**

▼ 0.2 ppt



Monthly hours worked

levels (000's) **18 297** monthly change **1.1%**

Job vacancies

(August 2020)

YoY change

NT ▼ **-22.6%** Australia ▼ **-13.3%**

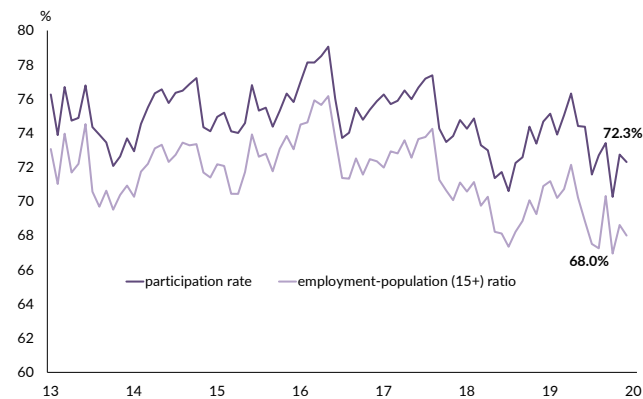
Quarterly change

▲ **147.1%** ▲ **67.1%**

7.4 unemployed persons per every job vacancy nationally

3.4 unemployed persons per every NT job vacancy

Employment and participation rates



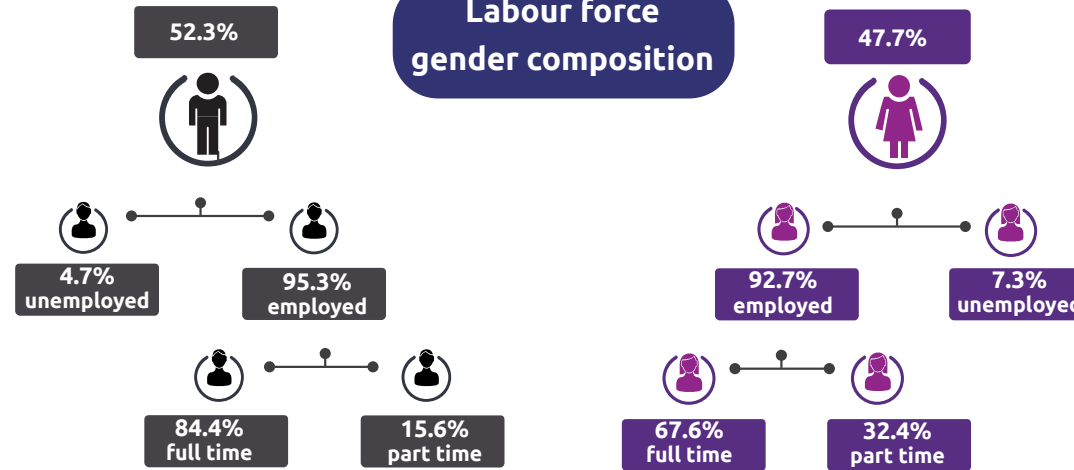
NT Aboriginal participation rate (2016)

37.3%

National participation rate

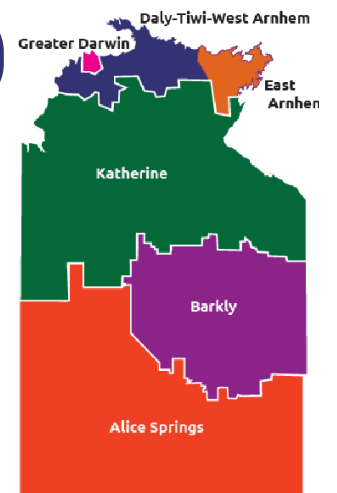
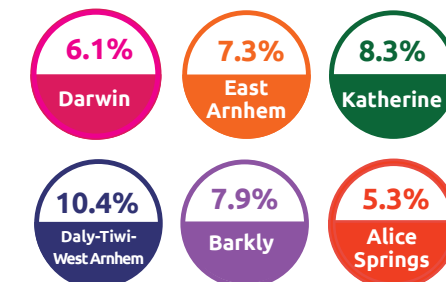
66.1%

Labour force gender composition



Regional unemployment rates

Quarterly change (June 2020)



Industry share of employment

Quarterly change (August 2020)

Top 5

Construction **8.0%**

Retail **8.7%**

60.1% of Territory workers are employed in the Greater Darwin region

Employment growth by industry

Quarterly change (August 2020)

Top 5

- Agriculture, forestry and fishing**
- Public administration and safety**
- Health care and social assistance**
- Professional, scientific and technical services**
- Education and training**

Job numbers	Year on year %
2626	58.5
23 357	14.8
21 814	12.3
7710	11.8
12 868	8.7

Wage price index

Quarterly change (September 2020)

- ▲ **0.4%** NT change in price of wages
- ▲ **0.4%** NT change in private sector
- ▲ **0.5%** NT change in public sector
- ▲ **0.4%** National change in price of wages