



Live Cattle Exports via Darwin Port – DECEMBER 2014

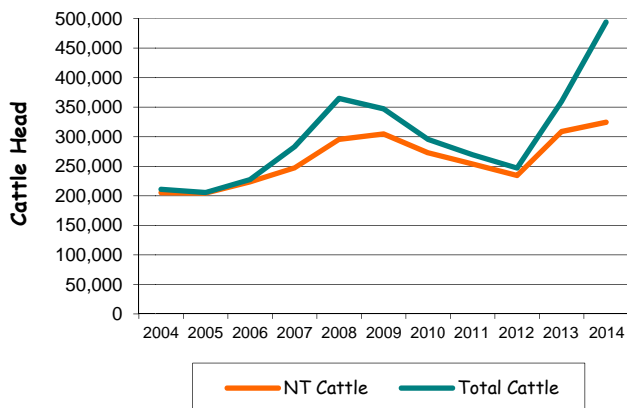
Please note that the "NT CATTLE" figures are NT cattle exported through the Port of Darwin only, some NT cattle are exported through interstate ports.

Destination	TOTAL CATTLE (including interstate)							# NT CATTLE						
	2012	2013	Last year 31/12/13	YTD 31/12/14	1-31 Dec 2014	Previous Month	Difference	2012	2013	Last year 31/12/13	YTD 31/12/14	1-31 Dec 2014	Previous Month	Difference
BRUNEI	4,639	4,043	4,043	4,925	0	793	-793	4,639	4,043	4,043	4,925	0	793	-793
INDONESIA	201,748	282,022	282,022	386,183	54,322	6,845	+47,477	189,994	243,978	243,978	251,232	35,822	3,845	+31,977
PHILIPPINES	27,324	22,403	22,403	16,080	0	0	0	26,337	15,063	15,063	11,221	0	0	0
SABAH	460	0	0	0	0	0	0	460	0	0	0	0	0	0
SARAWAK	0	800	800	0	0	0	0	0	800	800	0	0	0	0
W-MALAYSIA	10,018	14,952	14,952	22,309	0	2,788	0	10,018	12,094	12,094	15,708	0	788	-788
VIETNAM	2,801	35,396	35,396	64,461	9,888	3,944	+5,944	2,801	32,806	32,806	41,391	4,888	1,944	+2,944
EGYPT	0	0	0	0	0	0	0	0	0	0	0	0	0	0
TOTAL	246,990	359,616	359,616	493,958	64,210	14,370	+49,840	234,249	308,784	308,784	324,477	40,710	7,370	+33,340
				+134,342							+15,693			

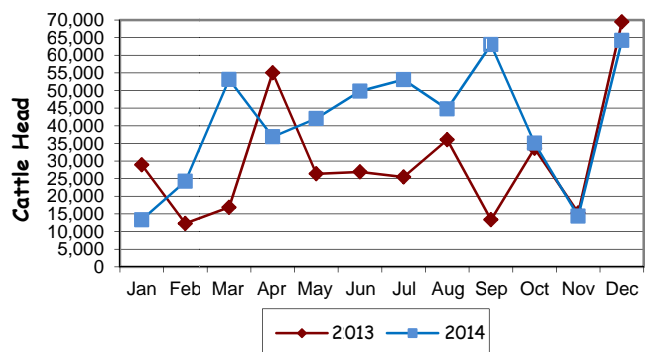
DECEMBER at a glance

- 64,210 head of cattle through the Port of Darwin during December, 49,840 more than November and 5,237 less than December last year.
- 2014 total cattle figures indicate 134,342 head more than last year. NT cattle 15,693 more than last year.

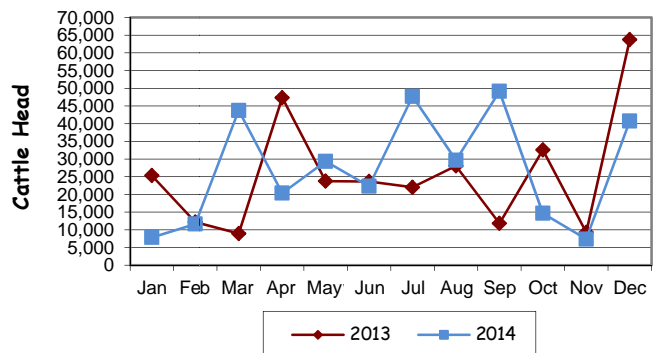
Live Cattle Exports thru the Port of Darwin - last 10 years (2004 to 2014)



TOTAL Live Cattle Exports thru Port of Darwin 2013 v 2014

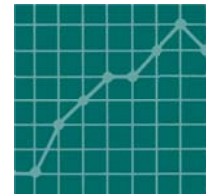


NT Live Cattle Exports thru Port of Darwin 2013 v 2014



PREVIOUS 8 YEARS


Total Cattle, Port of Darwin								NT Cattle, Port of Darwin							
2007	2008	2009	2010	2011	2012	2013	2014	2007	2008	2009	2010	2011	2012	2013	2014
283,046	364,944	347,314	295,605	269,617	246,990	359,616	493,958	247,281	295,539	304,818	272,749	253,797	234,249	308,784	324,477



OTHER LIVESTOCK EXPORTS VIA DARWIN PORT (includes NT and Interstate Livestock)

Destination	Buffalo			Camels			Goats			Horses			Sheep			Pigs		
	2013	2014	1-31 Dec	2013	2014	1-31 Dec	2013	2014	1-31 Dec	2013	2014	1-31 Dec	2013	2014	1-31 Dec	2013	2014	1-31 Dec
BRUNEI	400	488	0	0	0	0	1080	154	154	0	0	0	0	0	0	0	0	0
INDONESIA	201	0	0	0	0	0	0	0	0	0	0	0	0	0	0	0	0	0
PHILIPPINES	199	0	0	0	0	0	0	0	0	0	0	0	0	0	0	0	0	0
W-MALAYSIA	0	0	0	0	0	0	0	0	0	0	0	0	0	0	0	0	0	0
SABAH	0	0	0	0	0	0	0	0	0	0	0	0	0	0	0	0	0	0
SARAWAK	0	0	0	0	0	0	0	0	0	0	0	0	0	0	0	0	0	0
VIETNAM	0	4567	25	0	0	0	0	0	0	0	0	0	0	0	0	0	0	0
TOTAL	800	5055	25	0	0	0	1080	154	154	0	0	0	0	0	0	0	0	0

NATIONAL CATTLE PRICES - W/E 18/12/2014

HEAVY STEER									MEDIUM STEER										
Estimated dressed weight price (cents/kg)									Estimated dressed weight price (cents/kg)										
SALEYARDS				O.T.HOOKS					SALEYARDS				O.T.HOOKS						
NSW	QLD	SA	AV (Aust)	NSW	QLD	SA	AV (Aust)	NSW	QLD	SA	AV (Aust)	NSW	QLD	SA	AV (Aust)	NSW	QLD	SA	AV (Aust)
This week	357	nq	327	353	359	370	345	358	This week	375	337	327	354	350	357	335	350		
Last week	366	364	nq	357	354	370	345	357	Last week	378	350	224	354	345	357	335	349		
Year ago	318	nq	318	nq	nq	nq	nq	nq	Year ago	307	nq	nq	inq	nq	nq	nq	nq		
MEDIUM COW									TRADE STEER										
Estimated dressed weight price (cents/kg)									Estimated dressed weight price (cents/kg)										
SALEYARDS				O.T.HOOKS					SALEYARDS				O.T.HOOKS						
NSW	QLD	SA	AV (Aust)	NSW	QLD	SA	AV (Aust)	NSW	QLD	SA	AV (Aust)	NSW	QLD	SA	AV (Aust)	NSW	QLD	SA	AV (Aust)
This week	313	328	259	309	297	320	282	298	This week	384	365	322	366	355	361	355	347		
Last week	315	314	236	303	297	320	282	297	Last week	369	371	314	360	351	361	335	346		
Year ago	258	211	213	nq	nq	nq	nq	nq	Year ago	345	337	295	inq	nq	nq	nq	nq		
LIVE EXPORT QUOTES									<p>Prices courtesy of Meat & Livestock Australia</p>  <p>www.mla.com.au</p>										
Estimated live weight price (cents/kg)																			
LIGHT STEERS (260-360 kg)				LIGHT HEIFERS (260-360 kg)															
Darwin		Broome		Darwin		Broome													
This week	260		nq		240			nq											
Last week	260		nq		240			nq											
Year ago	220		nq		200			nq											

CURRENCY EXCHANGE RATES

Key Currencies 1AUD =	Current 6.1.2015	Previous month 1.12.2014	3 months ago 1.10.2014	1 Year ago 1.1.2014	Pre-devaluation 01.07.1997
Brunei Dollar	1.07522	1.09282	1.09297	1.10893	1.076
Indonesian Rupiah	10,095.0	10,400.7	10,586.2	10,640.5	1830
Philippine Peso	36,333.61	37,985.3	39,066.6	40,057.4	19.84
Malaysian Ringgit	2.86154	2.90331	2.85240	2.94686	1.9
Euro	0.67382	0.68268	0.69073	0.64998	N/A
US Dollar	0.80760	0.84998	.87124	.88040	0.752
Vietnam Dong	17,094.3	17,922.6	18,251.1	18,248.3	

Prepared by the NT Department of Primary Industry and Fisheries

This publication contains commodity market information prepared for DPIF staff use in strategic research and extension planning. While DPIF exercise care in the compilation and preparation of this information, no responsibility is taken for its accuracy or for the completeness of any information that is reproduced from other sources. DPIF denies any loss or damage to any person whether caused directly or indirectly by the use of any of the information provided.

