

Review of Conditions of Liquor Licenses – Barkly Region

Supporting Data



Document title	Review of Conditions of Liquor Licenses – Barkly Region (supporting data)
Contact details	Criminal Justice Research and Statistics Unit Department of the Attorney-General and Justice
Approved by	Greg Shanahan
Date approved	9 November 2020

Version	Date	Author	Changes made
1	6 Nov 2020	Foster Lau	Document preparation
1.1	6 Nov 2020	Carolyn Whyte	Document review
1.2	9 Nov 2020	Foster Lau	Updates

Acronyms	Full form
BDR	Banned Drinker Register
IJIS	Integrated Justice Information System
PAC	Pure alcohol content
PROMIS	Police Real-time Online Management Information System
PoSi	Point of Sale Intervention

Contents

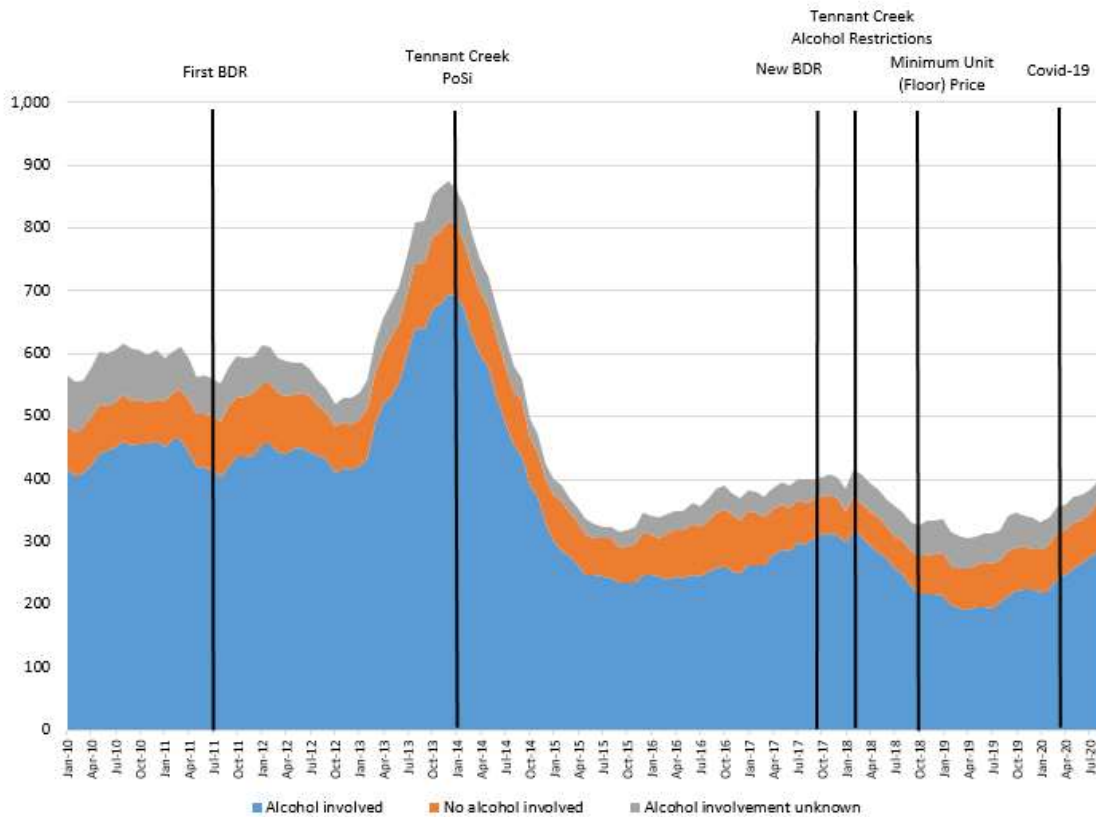
- 1. Overview4
- 2. Recorded assault offences4
- 3. Drink-driving offences5
- 4. Liquor-related offences6
- 5. Alcohol-attributable emergency presentations.....7
- 6. Wholesale alcohol supply.....8
- 7. Liquor transactions9
- 8. Tables.....10

1. Overview

This document includes summaries of key alcohol-related data series over time for the Barkly region. For the purposes of this document, the Barkly region is defined as the Barkly Statistical Area 3 using the Australian Statistical Geography Standard¹ (including the Tennant Creek Statistical Area 2 and the Barkly Statistical Area 2). Except for the chart of liquor transactions, all charts are presented as 12-month or 4-quarter rolling sums. In these charts, each point indicates the quantity in the 12-month or 4-quarter period to that point. This accounts for seasonal fluctuations as each point represents a full year, and makes the underlying patterns more apparent.

2. Recorded assault offences

Figure 1. Recorded assault offences by alcohol involvement, Barkly region (12-month rolling sums)

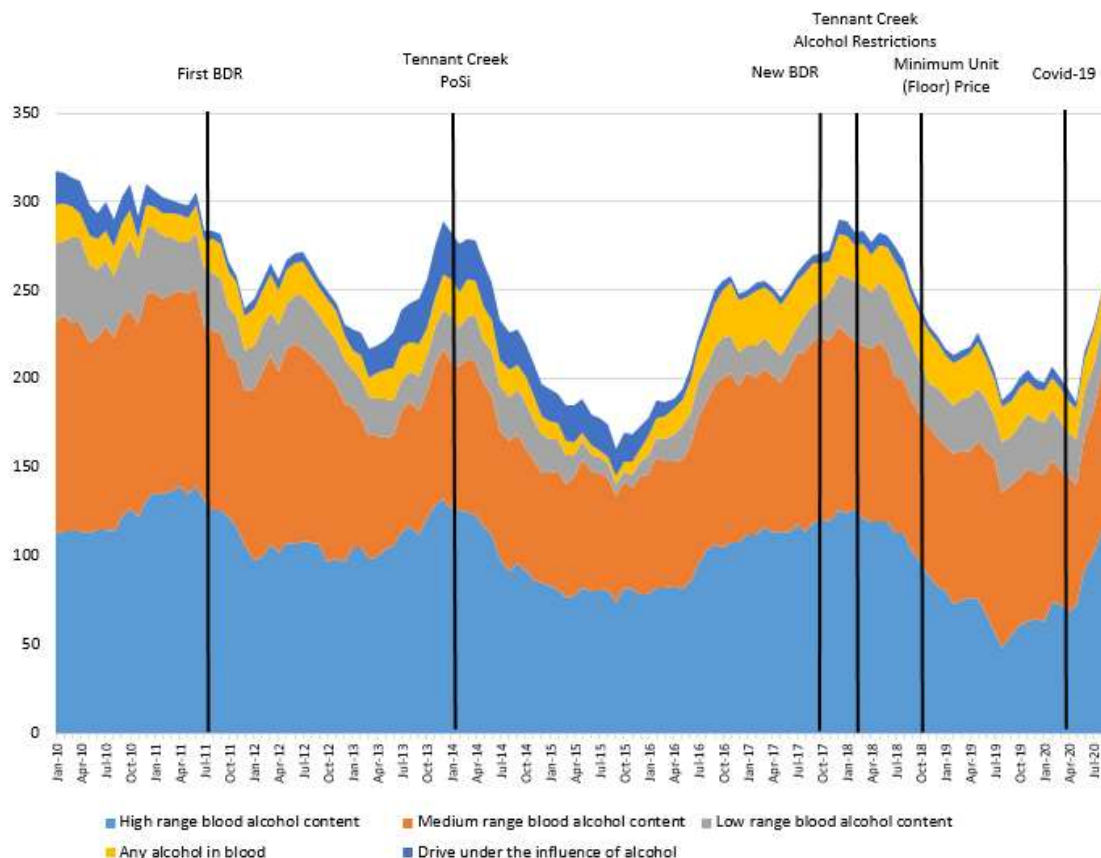


- There were 295 alcohol-related assault offences in the Barkly region in the 12 months ending September 2020, 38% (81) more than previous year, and 28% (65) more than two years ago.
- Alcohol was involved in 75% of the assaults in the Barkly region in the most recent year.

¹https://www.abs.gov.au/ausstats/subscriber.nsf/log?openagent&1270055001_asgs_2011_nt_maps.pdf&1270.0.55.001&Publication&B0AC271BC8160338CA257801000E0692&&July%202011&23.12.2010&Latest

3. Drink-driving offences

Figure 2. Drink-driving offences (apprehension and infringement), Barkly region (12-month rolling sums)

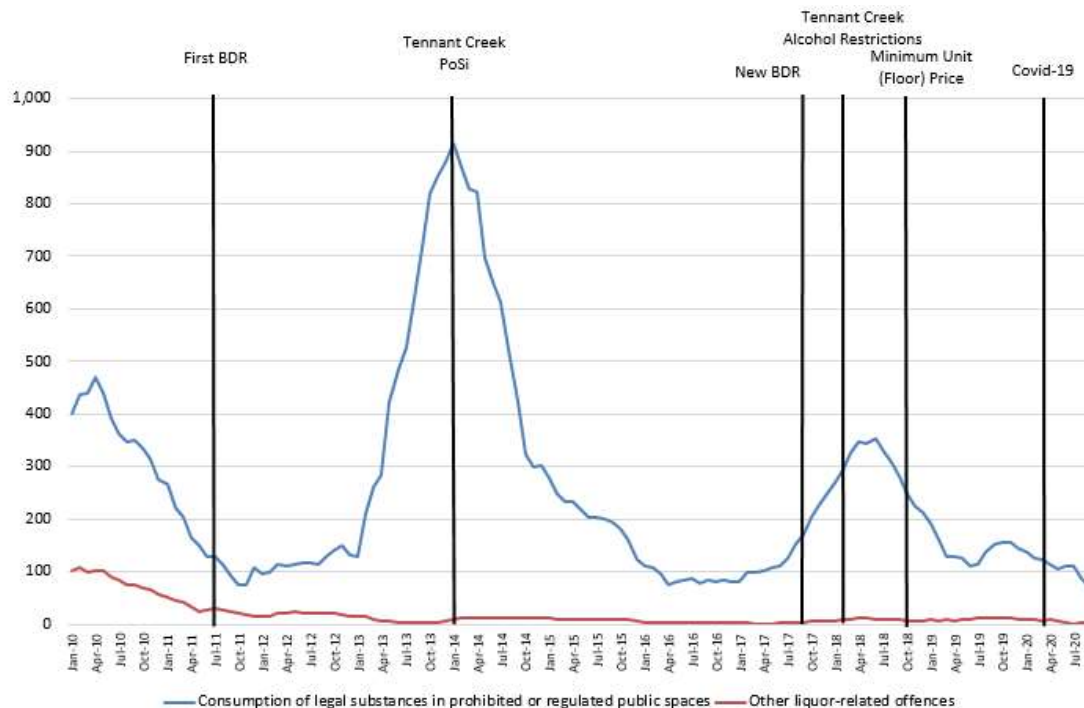


- In the 12 months ending September 2020, there were 259 drink driving offences in the Barkly region, 34% (66) more than in the previous year, and 3% (7) more than two years ago.
- High-range offences increased by 109% (61); medium range offences increased by 8% (7); low-range offences decreased by 4% (1); any alcohol in blood (in situations where this is an offence) offences increased by 5% (1); and driving under the influence of alcohol decreased by 40% (2).
- High-range drink driving offences accounted for 26-48% of all drink driving offences in the Barkly region over the period shown, and 45% in the 12 months ending September 2020.
- Medium-range drink driving offences accounted for 27-47% of all drink driving offences in the period shown, and 36% in the 12 months ending September 2020.
- Low-range drink driving offences accounted for 4-15% of all drink driving offences in the period shown, and 10% in the 12 months ending September 2020.
- Any alcohol in blood offences accounted for 2-13% of all drink driving offences in the period shown, and 8% in the 12 months ending September 2020. This category is dominated by offences by unlicensed drivers, but also includes offences by learner and young/less experienced drivers as well as driving instructors and drivers of certain types of vehicles, all of whom are prohibited to drive with any level of blood alcohol.

- Driving under the influence of alcohol offences accounted for 1-11% of alcohol-related driving offences in the period shown, and 1% in the 12 months ending September 2020.
- Note that these are active policing offences, and so they may respond to changes in Police operations in a different way than the victim-based offences (such as assault, other offences against the person, and property offences).

4. Liquor-related offences

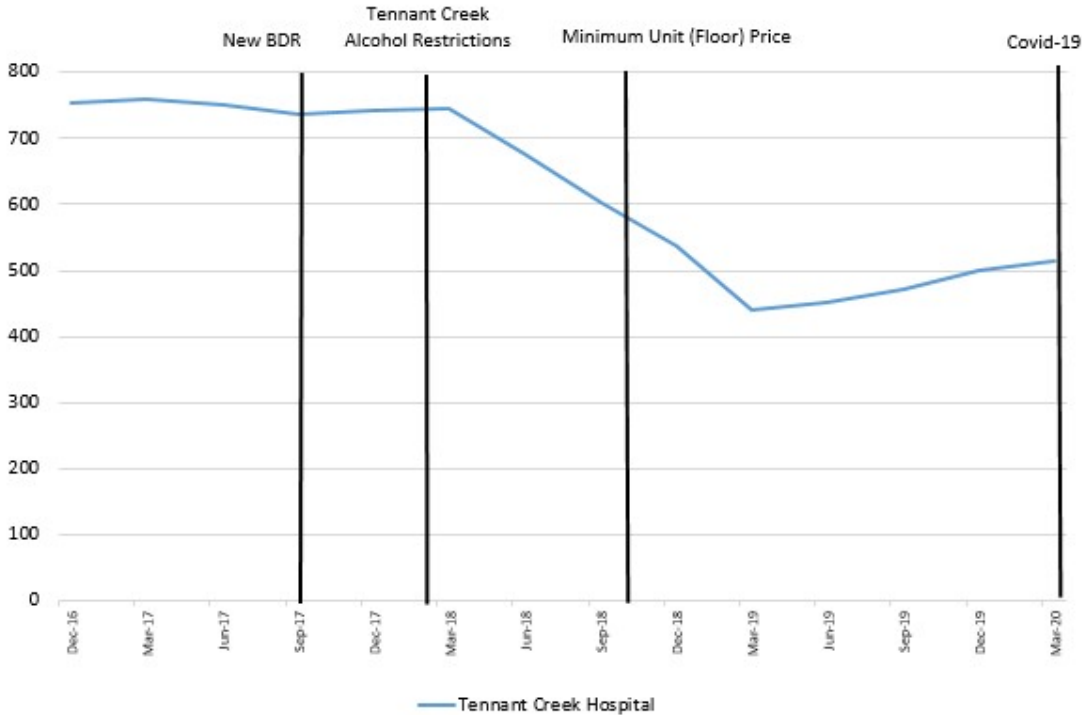
Figure 3. Liquor-related offences (apprehension and infringement), Barkly region (12-month rolling sums)



- In the 12 months ending September 2020, there were 71 offences involving the consumption of alcohol in prohibited or regulated public spaces in the Barkly region, 54% (82) fewer than previous year, and 75% (210) fewer than two years ago.
- In the 12 months ending September 2020, there were 3 liquor-related offences in the Barkly region, 73% (8) fewer than previous year, and 67% (6) fewer than two years ago.
- These are also active policing offences, and numbers are influenced by operational intensity as well as changes in underlying driving behaviour.

5. Alcohol-attributable emergency presentations

Figure 4. Alcohol-attributable emergency department presentations, Tennant Creek Hospital (four-quarter rolling sums) – Department of Health

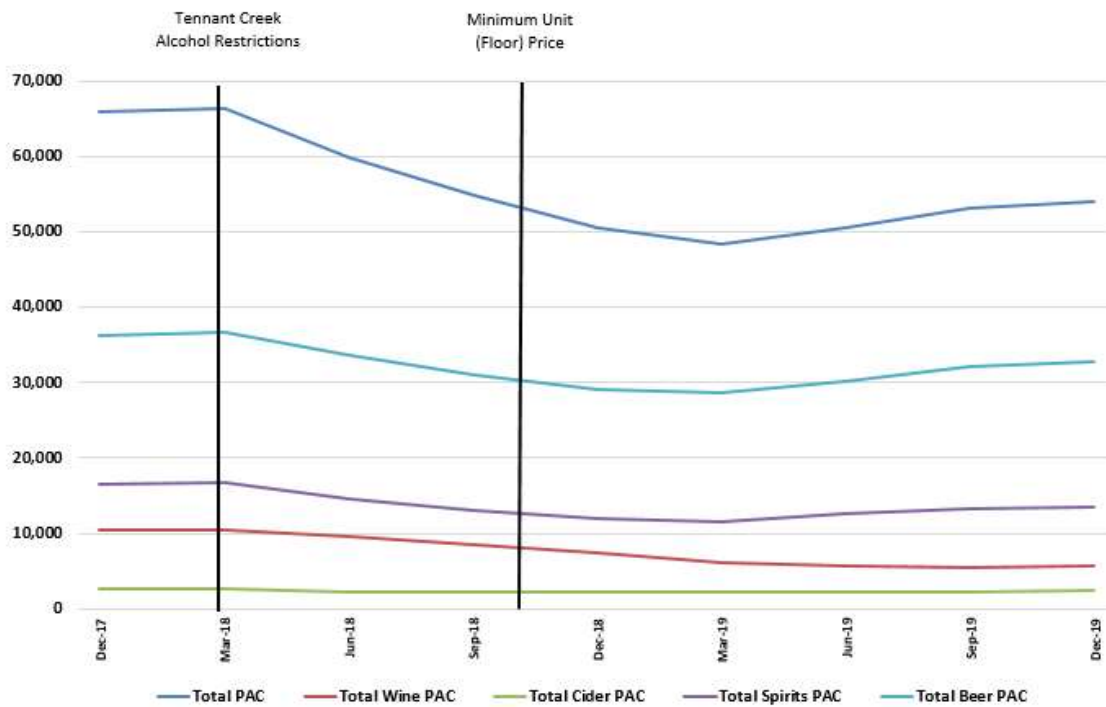


The numbers of the above chart represent emergency room visits that are attributed to alcohol-related conditions. They do not include presentations where alcohol is a secondary factor. Data were available by quarters for the period of January 2016 to March 2020.

- In the four quarters ending March 2020, there were 514 alcohol attributable emergency presentations in the Tennant Creek Hospital, 16% (72) more than in the four quarters ending March 2019, but 31% (232) fewer than in the four quarters ending March 2018.

6. Wholesale alcohol supply

Figure 5. Wholesale alcohol supply, Barkly region (four-quarter rolling sums) – Department of Industry, Tourism and Trade



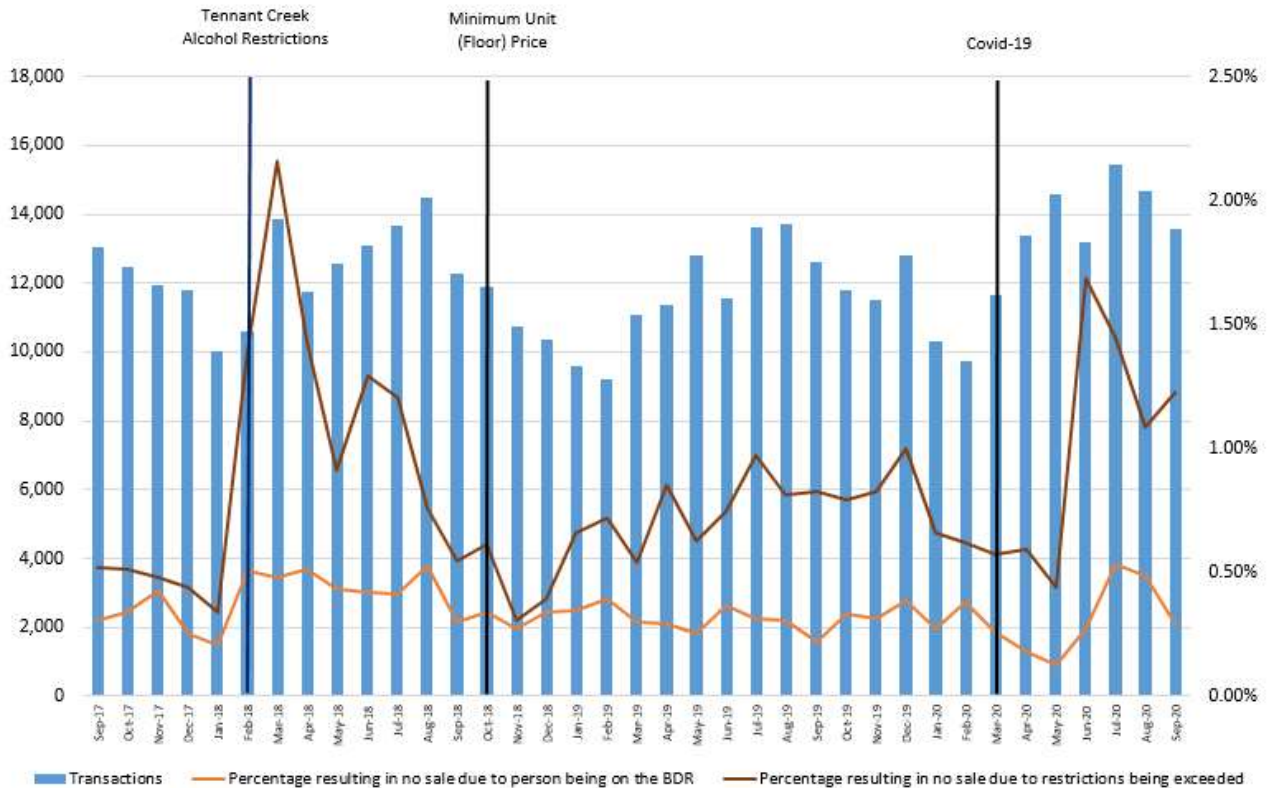
The figures of above chart represent 4-quarter rolling sums for the wholesale alcohol supply in litres of Pure Alcohol Content (PAC) supplied to retailers in the Barkly region. Data were provided by quarters for the period of January 2017 to December 2019.

- The total wholesale PAC supply to the Barkly region was 54,125 litres in the four quarters ending December 2019, 7% (3,508 litres) more than in the four quarters ending December 2018. Cider increased by 9% (190 litres), total spirits increased by 12% (1,407 litres), total beer increased by 13% (3,666 litres), but total wine decreased by 24% (1,755 litres).
- However, the total wholesale PAC supply to the Barkly region in the four quarters ending December 2019 was 18% (11,823 litres) less than in the four quarters ending December 2017. Cider decreased by 11% (289 litres), total spirits decreased by 19% (3,188 litres), total beer decreased by 10% (3,484 litres), and total wine decreased by 46% (4,862 litres).

7. Liquor transactions

On the chart below, the number of transactions is shown on the left-hand axis, and the percentage of transactions resulting in no sale is shown on the right-hand axis.

Figure 6. Takeaway liquor transactions screened against the Banned Drinker Register, Barkly region (by month)



- There were 13,556 liquor transactions recorded in the Barkly region in September 2020, 7% (924) more than September 2019, and 10% (1,272) more than September 2018.
- There were 40 transactions (0.3%) in September 2020 that resulted in no sale because the person was on the Banned Drinker Register. On a percentage basis, this was higher than the 0.22% recorded in September 2019, but similar to that recorded in September 2018 (0.3%).
- There was 1.22% (166) transactions in September 2020 resulting in no sale due to liquor restrictions being exceeded. On a percentage basis, this was higher than the 0.82% recorded in September 2019 and the 0.55% in September 2018.

8. Tables

Table 1: Recorded assault offences by alcohol involvement, Barkly region

Data for the 12 months ending in September, 2015 to 2020

Alcohol involvement	2015	2016	2017	2018	2019	2020
Alcohol involved	234	258	306	230	214	295
No alcohol involved	58	89	60	55	73	69
Not known	23	38	33	46	54	30
Total	315	385	399	331	341	394

Data extracted from PROMIS on 1 November 2020².

Table 2: Drink-driving offences (apprehension and infringement), Barkly region

Data for the 12 months ending in September, 2015 to 2020

Drink-driving offences	2015	2016	2017	2018	2019	2020
High range	74	107	119	103	56	117
Medium range	60	90	103	85	85	92
Low range	7	21	20	32	27	26
Alcohol in blood	4	25	23	26	20	21
Driving under influence	16	7	5	6	5	3
Total	161	250	270	252	193	259

Data extracted from IJIS on 27 October 2020.

Table 3: Liquor-related offences (apprehension and infringement), Barkly region

Data for the 12 months ending in September, 2015 to 2020

Liquor-related offences	2015	2016	2017	2018	2019	2020
Consumption of legal substances in prohibited or regulated public spaces	194	84	170	281	153	71
Other liquor-related offences	9	3	4	9	11	3
Total	203	87	174	290	164	74

Data extracted from IJIS on 28 October 2020.

Table 4: Alcohol-attributable emergency department presentations, Tennant Creek Hospital

Data for the four quarters ending in March, 2017 to 2020

	2017	2018	2019	2020
Tennant Creek Hospital	759	746	442	514

Data for the above table came from the Department of Health and were obtained from the NT Alcohol Reform Data and Evaluation website³.

² Data available at <https://data.nt.gov.au/organization/department-of-attorney-general-and-justice>.

³ <https://alcoholreform.nt.gov.au/data-and-evaluation/graph> . Sourced on 30 October 2020.

Table 5: Wholesale alcohol supply, Barkly region

Data for the four quarters ending in December, 2017 to 2019

Wholesale alcohol supply	2017	2018	2019
Wine	10,484	7,377	5,622
Cider	2,597	2,119	2,308
Spirits	16,615	12,020	13,427
Beer	36,252	29,102	32,768
Total PAC	65,948	50,617	54,125

Data for the above table were supplied by Licensing NT, Department of Industry, Tourism and Trade.

Table 6: Takeaway liquor transactions screened against the Banned Drinker Register, Barkly region

Data for the month of September, 2017 to 2020

Liquor transactions	2017	2018	2019	2020
No sale-person on BDR	40	37	28	40
No sale-restriction exceeded	68	67	104	166
Sale-restriction applies	3,496	10,460	10,685	11,932
Sale-no restriction	9,431	1,720	1,815	1,418
Total	13,035	12,284	12,632	13,556

Data extracted from the BDR on 29 October 2020.