

Northern Territory Labour Market

April 2019

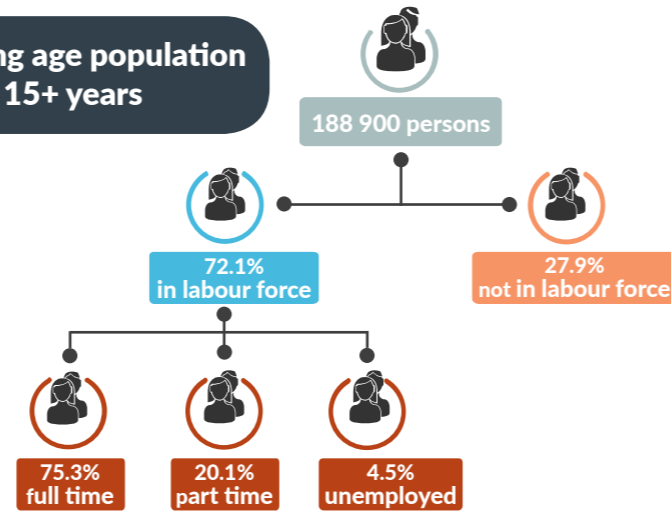


Population

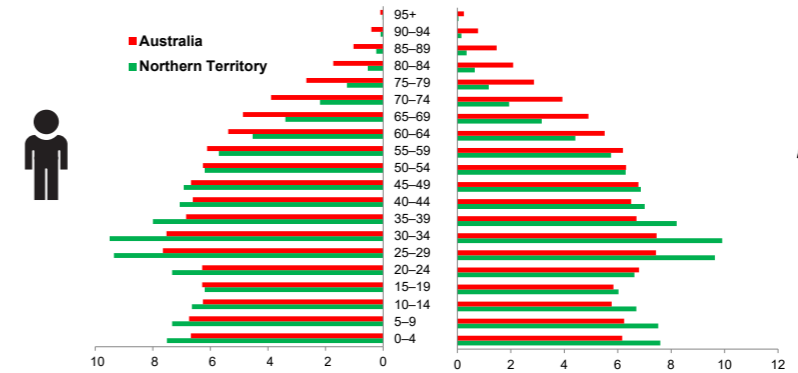
247 159 total resident population
30.3% Aboriginal (Census data)
59.1% live in Greater Darwin area
1.0% of National population

25.3 million

Working age population 15+ years



Population pyramid



Younger Territory population

32.6

NT median age (years)

37.3

National median age (years)



Employed

130 800 persons
 ▼ 400 persons



Unemployed

levels **6300 persons** rate **4.5%**
 ▼ 100 — 0.0 ppt
 National unemployment rate **5.1%**
 — flat



Youth unemployment

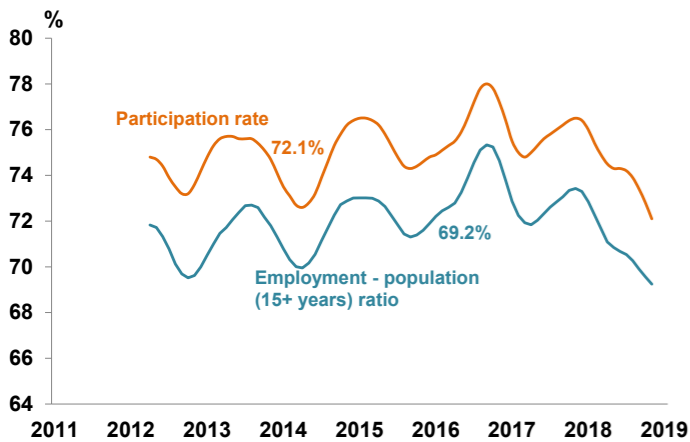
year average levels **2020 persons** rate **10.1%**
 ▼ 91 persons ▼ 0.7 ppts

Job vacancies

Yearly change
 NT ▼ **16.8%** Australia ▲ **18.3%**
 Quarterly change
 NT ▼ **8.1%** Australia ▲ **1.1%**

2.9 unemployed persons per every job vacancy nationally
1.8 unemployed persons per every NT job vacancy

Employment and participation rates



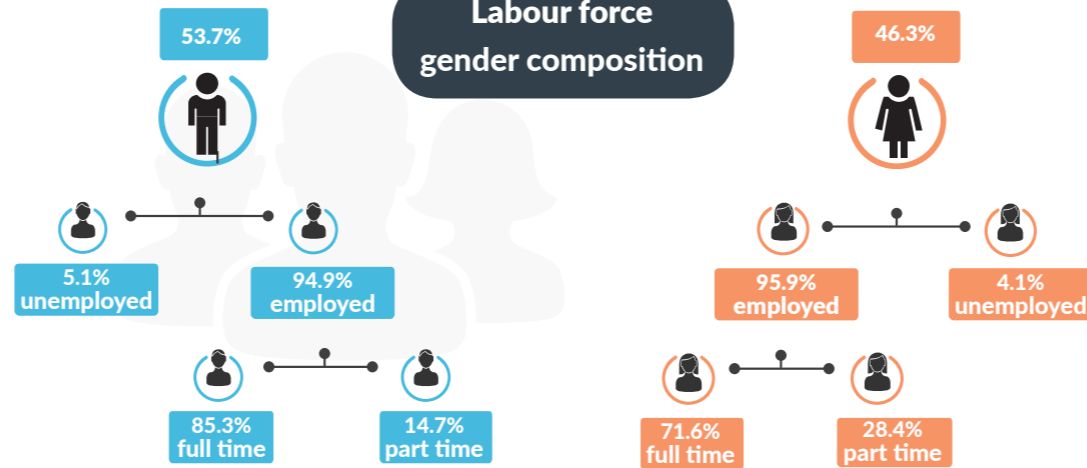
NT Aboriginal participation rate (2014-15)

47%

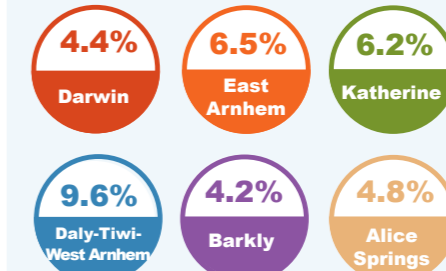
National participation rate

65.7%

Labour force gender composition



Regional unemployment rates



Industry share of employment

Top 5



Employment growth by industry

Top 5

Industry	Job Numbers	Year on Year %
Information media and telecommunications	1911	47.3
Wholesale trade	2486	23.9
Other services	7078	21.3
Agriculture, forestry and fishing	1917	18.0
Public administration and safety	21 836	17.7

Wage price index

- ▲ **0.5%** NT change in price of wages
- ▲ **0.5%** NT change in private sector
- ▲ **0.4%** NT change in public sector
- ▲ **0.5%** National change in price of wages