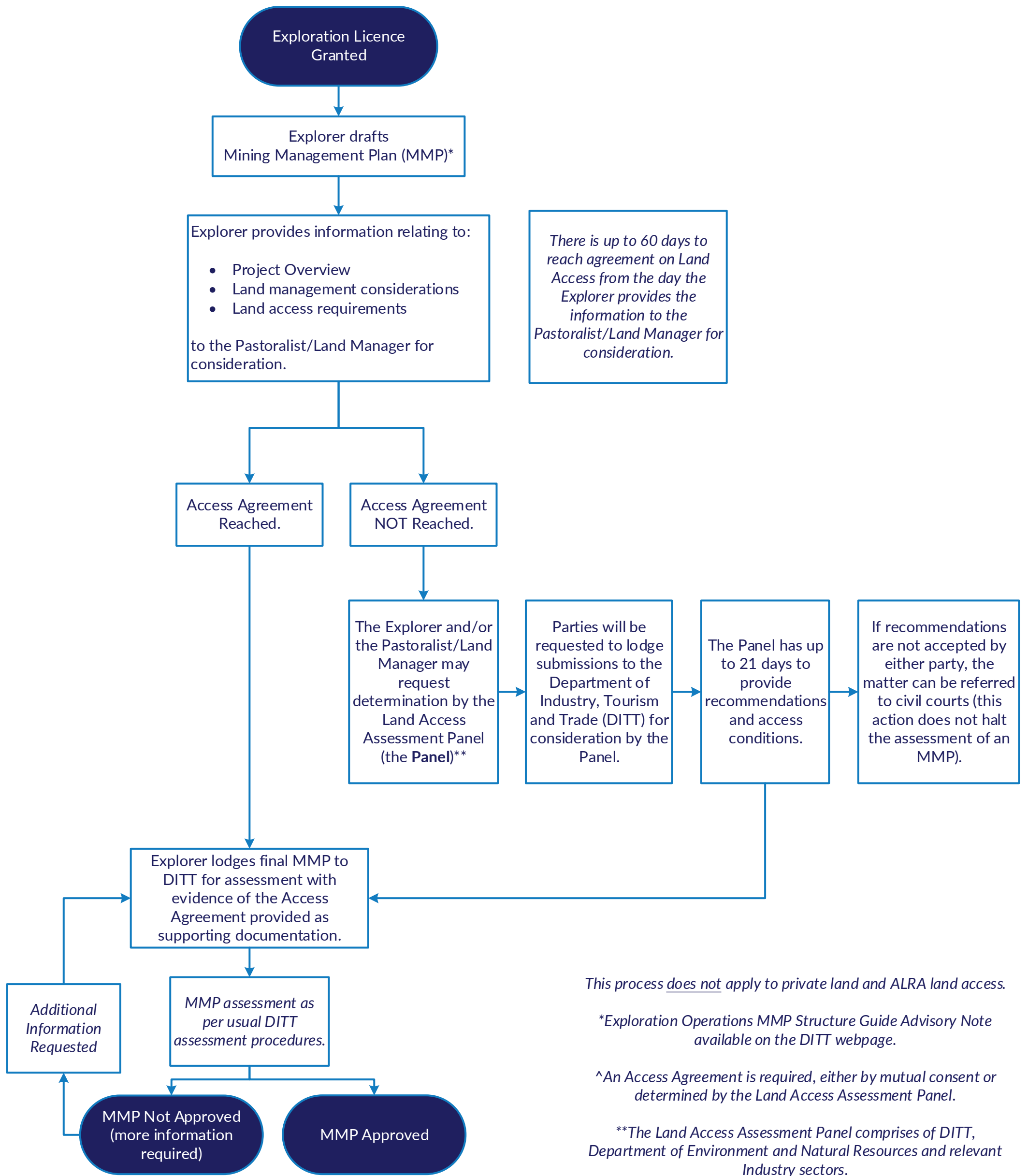


# Minerals - Stakeholder Engagement - Land Access - Substantial Disturbance on Pastoral Land Only



*This process does not apply to private land and ALRA land access.*

*\*Exploration Operations MMP Structure Guide Advisory Note available on the DITT webpage.*

*^An Access Agreement is required, either by mutual consent or determined by the Land Access Assessment Panel.*

*\*\*The Land Access Assessment Panel comprises of DITT, Department of Environment and Natural Resources and relevant Industry sectors.*

*^^ Evidence of the Access Agreement must be provided rather than just the details of the Access Agreement.*