

# Northern Territory Labour Market

June 2021

Monthly change (unless otherwise specified)



## Population

Quarterly Change (December 2020)

**246 561** total resident population  
Quarterly change (December 2020)

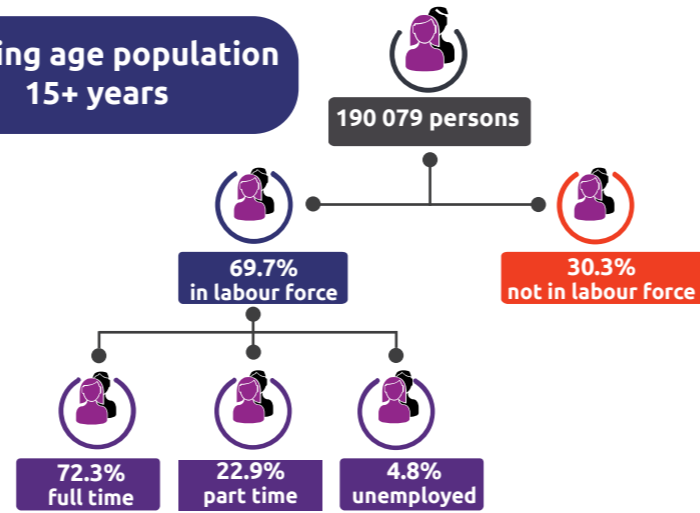
**30.3%** Aboriginal (Census data)

**59.1%** live in greater Darwin area

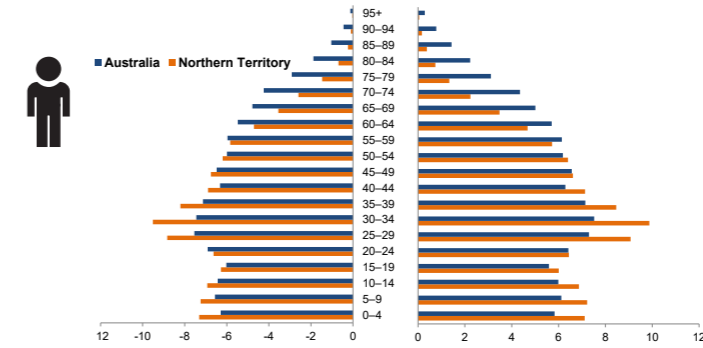
**1.0%** of national population

national population **25.7 million**

## Working age population 15+ years



## Population pyramid



## Median age

(to the nearest year)

**33**  
Northern Territory

**37**  
Australia



## Employed

**126 180 persons**

▼ **5106 persons**

## Unemployed

levels **6351 persons** rate **4.8%**

▲ **153 persons** ▲ **0.3 ppt**

National unemployment rate **4.9%**

▼ **0.2 ppt**



## Youth unemployment

year average levels **2548 persons** rate **15.3%**

▲ **926 persons** ▲ **6.0 ppt**

## Job vacancies

Quarterly change (May 2021)

YoY change

NT ▲ **46.8%** Australia ▲ **37.2%**

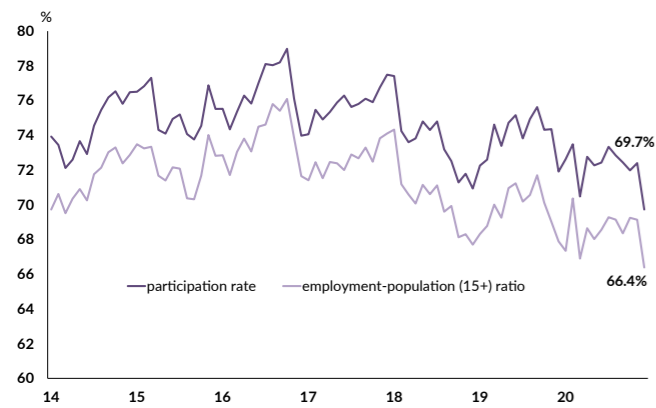
Quarterly change

NT ▲ **4.2%** Australia ▲ **22.1%**

**3.5** unemployed persons per every job vacancy nationally

**1.6** unemployed persons per every NT job vacancy

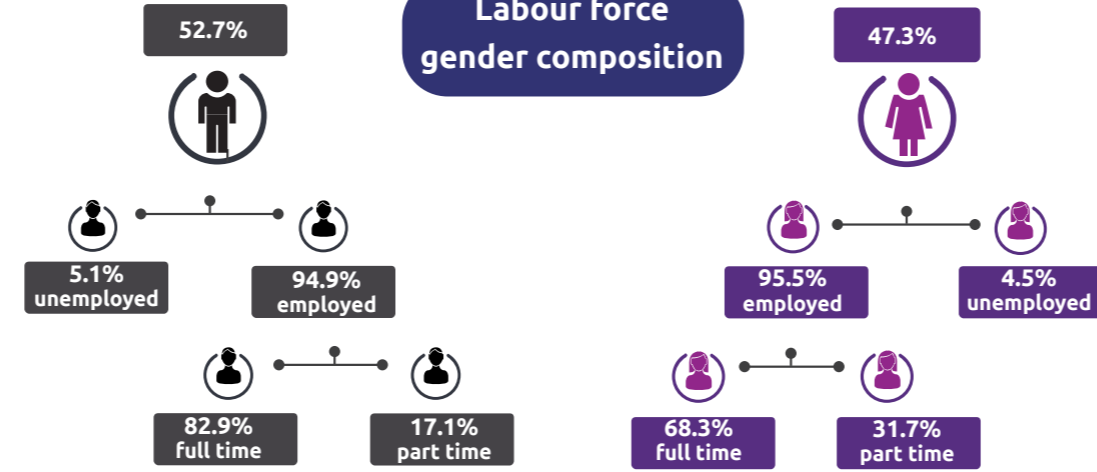
## Employment and participation rates



NT Aboriginal participation rate (2016) **37.3%**

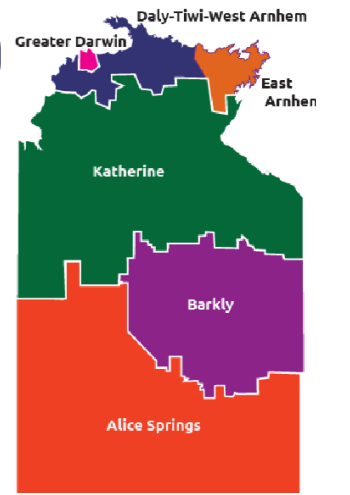
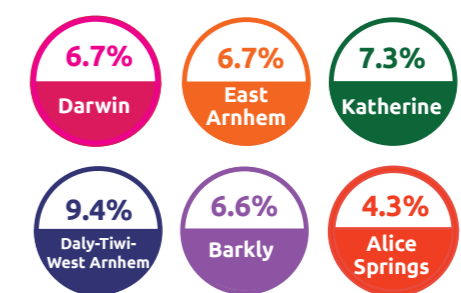
National participation rate **66.2%**

## Labour force gender composition



## Regional unemployment rates

Quarterly change (March 2021)



## Industry share of employment

Quarterly change (May 2021)

**Top 5**

- Education and Training **9.5%**
- Construction **7.9%**
- Retail **8.6%**
- Health care and social assistance **17.3%**
- Public administration and safety **16.9%**

**60.1%** of Territory workers are employed in the Greater Darwin region

## Employment growth by industry

Quarterly change (May 2021)



Industry	Job numbers	Year on year %
Mining	3049	37.8
Administrative and support services	5065	10.6
Health care and social assistance	22 670	8.7
Electricity, gas, water and waste services	1936	8.1
Accommodation and food services	8141	7.5

Job numbers	Year on year %
3049	37.8
5065	10.6
22 670	8.7
1936	8.1
8141	7.5

## Wage price index

Quarterly change (March 2021)

- ▲ **0.5%** NT change in price of wages
- ▲ **0.7%** NT change in private sector
- ▲ **0.1%** NT change in public sector
- ▲ **0.5%** National change in price of wages