

Northern Territory Labour Market

June 2019

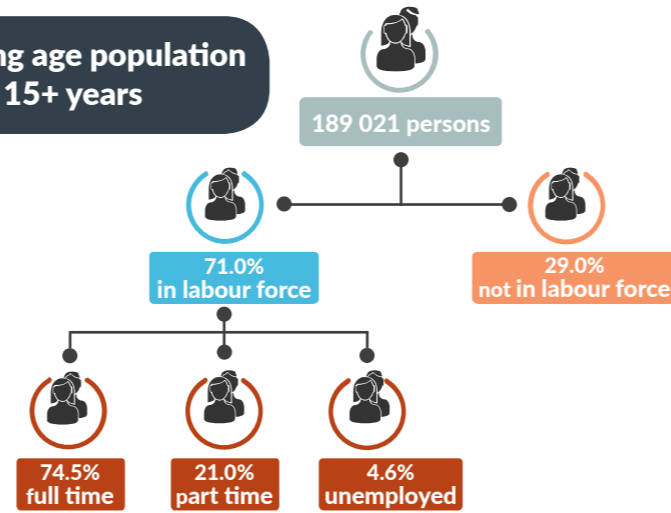


Population

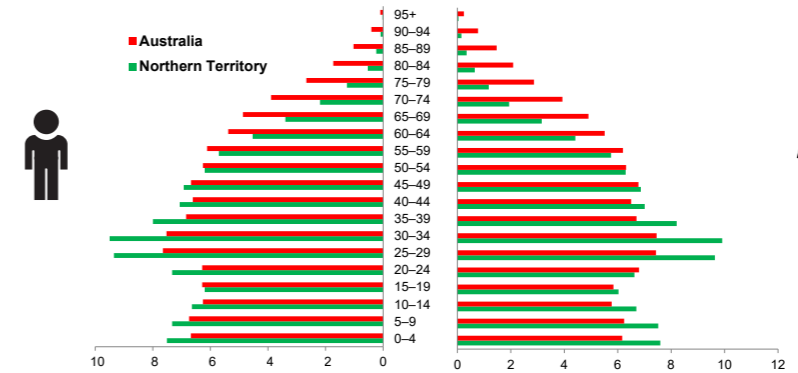
245 854 total resident population
 30.3% Aboriginal (Census data)
 59.1% live in Greater Darwin area
 1.0% of National population

25.4 million

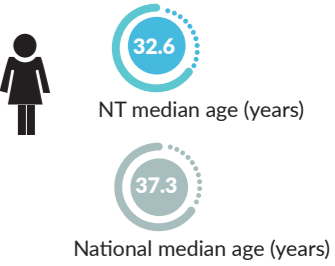
Working age population 15+ years



Population pyramid



Younger Territory population



Employed

129 105 persons
 ▲ 49 persons



Unemployed

levels 6183 persons
 ▼ 53
 rate 4.6%
 — flat
 National unemployment rate 5.2%
 — flat



Youth unemployment

year average levels 1959 persons
 ▼ 44 persons
 rate 10.1%
 — flat

Job vacancies

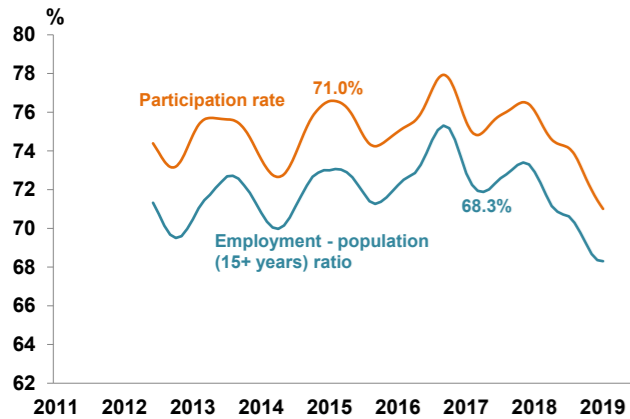
Yearly change
 NT ▲ 6.1%
 Australia ▲ 10.4%

Quarterly change
 NT ▲ 13.5%
 Australia ▼ 6.1%

2.9 unemployed persons per every job vacancy nationally

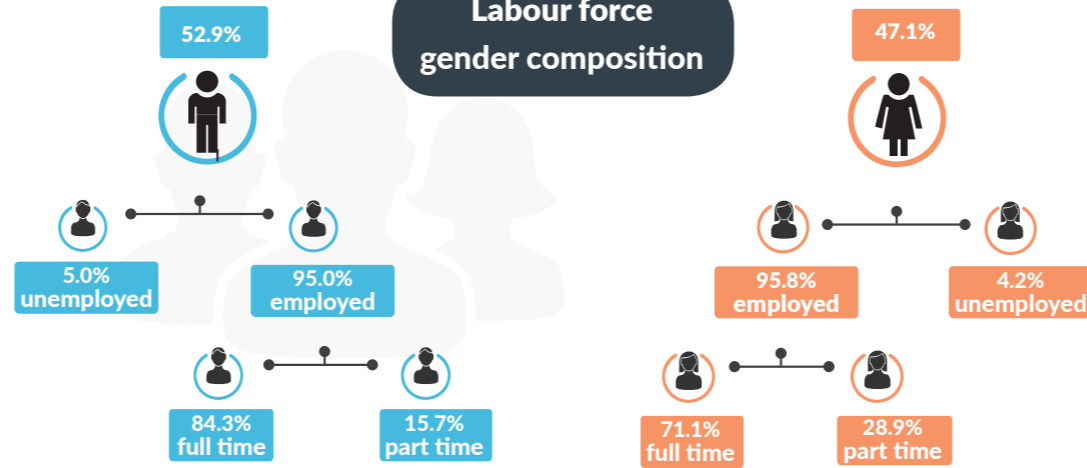
1.8 unemployed persons per every NT job vacancy

Employment and participation rates

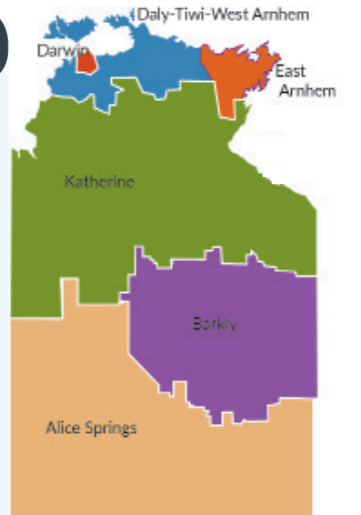
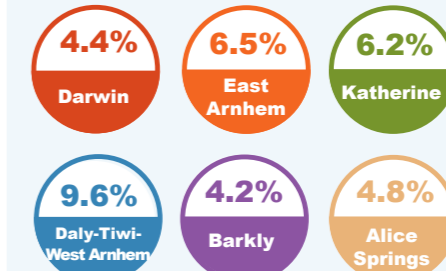


NT Aboriginal participation rate (2014-15) 47%
 National participation rate 66.0%

Labour force gender composition



Regional unemployment rates



Industry share of employment

Retail 8.6%

60.1% of Territory workers are employed in the Greater Darwin region

Top 5

Accommodation and Food Services 8.4%



Health Care 14.9%



Public Admin 13.3%

Employment growth by industry

Top 5

Industry	Job Numbers	Year on Year %
Administrative and support services	6291	46.6
Information media and telecommunications	1883	25.3
Electricity, gas, water and waste services	2736	14.7
Public administration and safety	21 075	13.1
Agriculture, forestry and fishing	1794	2.7

Wage price index

- ▲ 0.5% NT change in price of wages
- ▲ 0.5% NT change in private sector
- ▲ 0.4% NT change in public sector
- ▲ 0.5% National change in price of wages